



# HIGH POINT UNIVERSITY

## Rally Points 2017

*Choose to be extraordinary! <sup>SM</sup>*



# Table of Contents

## Non-Residential

Congdon School of Health Sciences .....	4
Cottrell Hall .....	5
Couch Hall.....	6
Employee Wellness Center.....	7
Hayworth Chapel and Hall .....	8
Hayworth Fine Arts Center.....	9
Millis Athletic Convocation Center .....	10
Norcross Graduate School.....	11
North College Administration .....	12
Norton Hall.....	13
Oak Hollow Center.....	14
Phillips School of Business.....	15
Qubein School of Communication.....	16
Roberts Hall.....	17
Slane Center .....	18
Smith Library .....	19
Steele Sports Center.....	20
Stout School of Education.....	21
Wanek Center.....	22
Webb Conference Center.....	23
Wilson Family School of Commerce .....	24
Witcher Athletic Performance Center.....	25
Wrenn Admissions Building .....	26

## Non-Residential

Belk Hall.....	27
Blessing Hall.....	28
Caffey Hall.....	29
Centennial Square 1 – Samuel Commons.....	30
Centennial Square 1 – Townhomes .....	30
Centennial Square 2 – Boles Commons.....	31

Centennial Square 2 - Townhomes.....	31
Finch Hall.....	32
710 Greek Village .....	33
730 Greek Village .....	34
765 Greek Village .....	35
770 Greek Village .....	36
785 Greek Village .....	37
790 Greek Village .....	38
810 Greek Village .....	39
825 Greek Village .....	40
830 Greek Village .....	41
845 Greek Village .....	42
870 Greek Village .....	43
890 Greek Village .....	44
Millis Residence Hall.....	45
North College Court.....	46
North College Terrace .....	47
North College Townhomes.....	48
806 Point Place .....	49
812 Point Place .....	50
818 Point Place .....	51
University Center (UC2) .....	52
University Village (U-Ville) Even Apartments .....	53
University Village (U-Ville) Odd Apartments.....	54
Village 1 .....	55
Village 2 .....	56
Village Grille and Pool .....	57
Wilson Hall .....	58
Women’s Complex.....	59
York Hall.....	60

# Congdon School of Health Sciences

In the event of a fire alarm proceed to the nearest exit and assemble at the designated rally point until given an **ALL CLEAR** from a University official or member of the High Point Fire Department.

<b>PRIMARY RALLY POINT</b>	Assemble in the far end of the Congdon parking lot, away from the building.
<b>SECONDARY RALLY POINT</b>	Assemble in the parking lot behind Wilson Family School of Commerce.



# Cottrell Hall

In the event of a fire alarm proceed to the nearest exit and assemble at the designated rally point until given an **ALL CLEAR** from a University official or member of the High Point Fire Department.

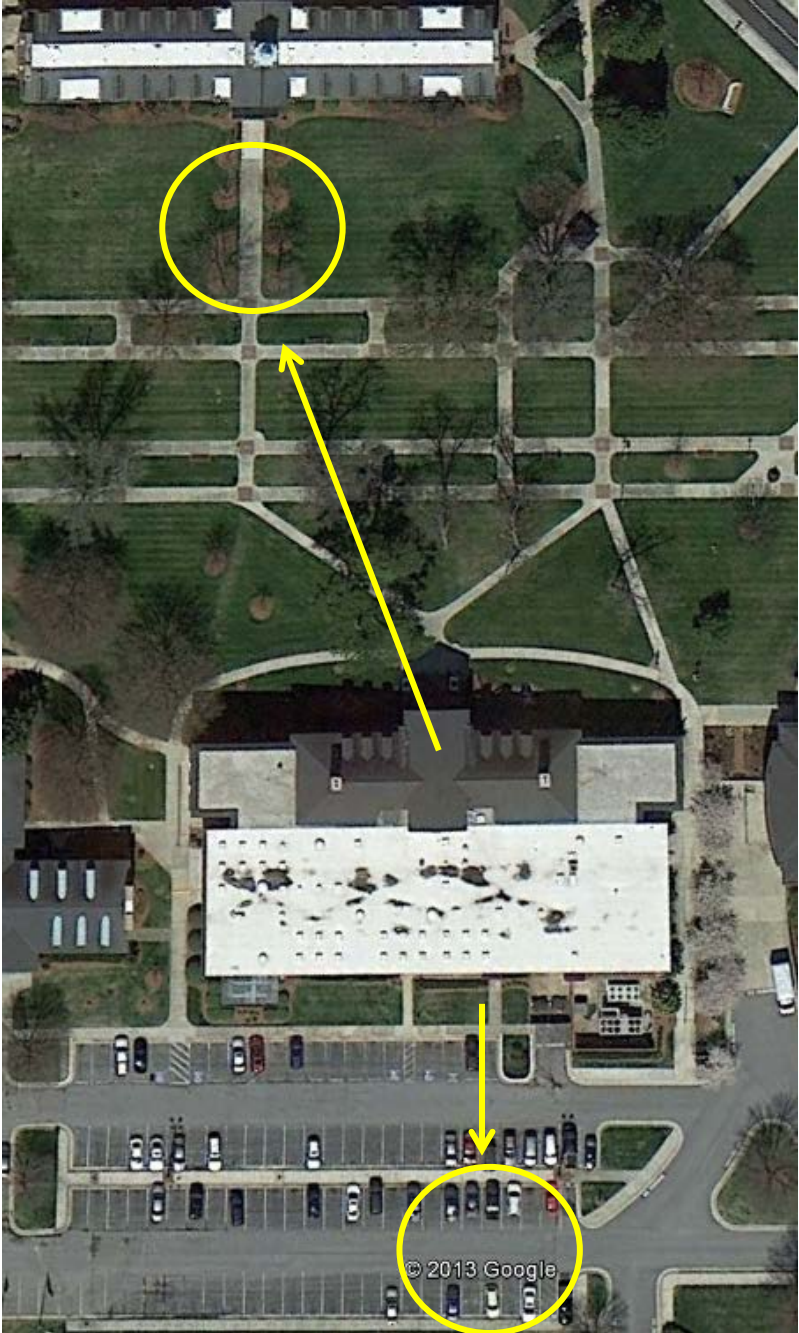
<b>PRIMARY RALLY POINT</b>	Cross the street and assemble in front of York Hall.
<b>SECONDARY RALLY POINT</b>	Cross the street and assemble inside the Wanek Center.



# Couch Hall

In the event of a fire alarm proceed to the nearest exit and assemble at the designated rally point until given an **ALL CLEAR** from a University official or member of the High Point Fire Department.

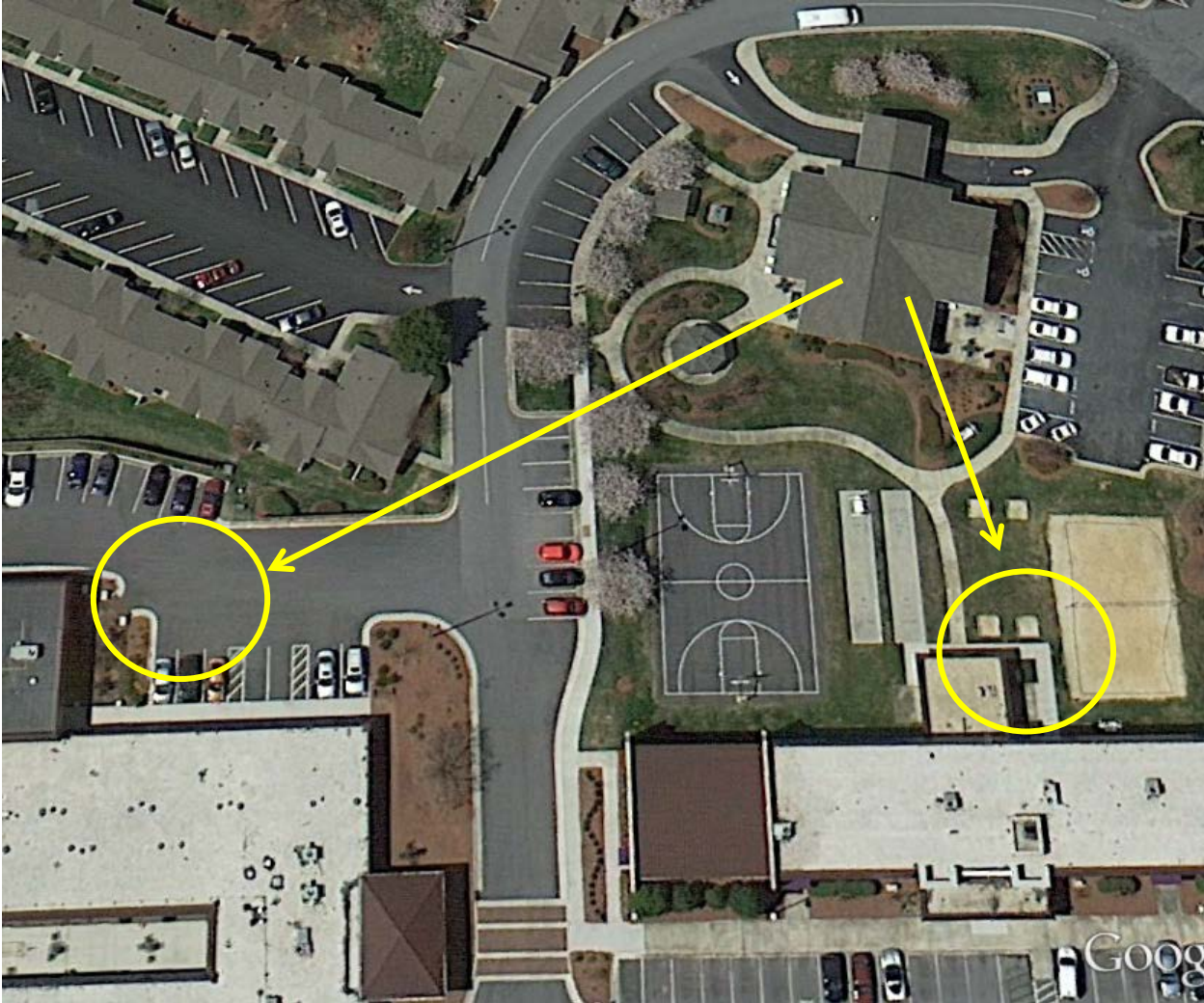
<b>PRIMARY RALLY POINT</b>	Exit the building and assemble in front of Finch Hall.
<b>SECONDARY RALLY POINT</b>	Exit the building and assemble in the Couch parking lot in front of the flag poles and CARE pole (towards the back).



# Employee Wellness Center

In the event of a fire alarm proceed to the nearest exit and assemble at the designated rally point until given an **ALL CLEAR** from a University official or member of the High Point Fire Department.

<b>PRIMARY RALLY POINT</b>	Assemble behind the North College Administration building near the horse shoe pit and volleyball court.
<b>SECONDARY RALLY POINT</b>	Assemble in front of the Silver Line Diner.



# Hayworth Chapel and Hall

In the event of a fire alarm proceed to the nearest exit and assemble at the designated rally point until given an **ALL CLEAR** from a University official or member of the High Point Fire Department.

<b>PRIMARY RALLY POINT</b>	Assemble in front of Phillips School of Business in the courtyard.
<b>SECONDARY RALLY POINT</b>	Assemble in the center of the Couch parking lot in front of the flag poles and blue CARE pole.





## Hayworth Fine Arts Center

In the event of a fire alarm proceed to the nearest exit and assemble at the designated rally point until given an **ALL CLEAR** from a University official or member of the High Point Fire Department.

<b>PRIMARY RALLY POINT</b>	Assemble in front of Finch Hall.
<b>SECONDARY RALLY POINT</b>	Assemble in the center of the Couch parking lot in front of the flag poles and CARE pole.



# Millis Athletic Convocation Center

In the event of a fire alarm proceed to the nearest exit and assemble at the designated rally point until given an **ALL CLEAR** from a University official or member of the High Point Fire Department.

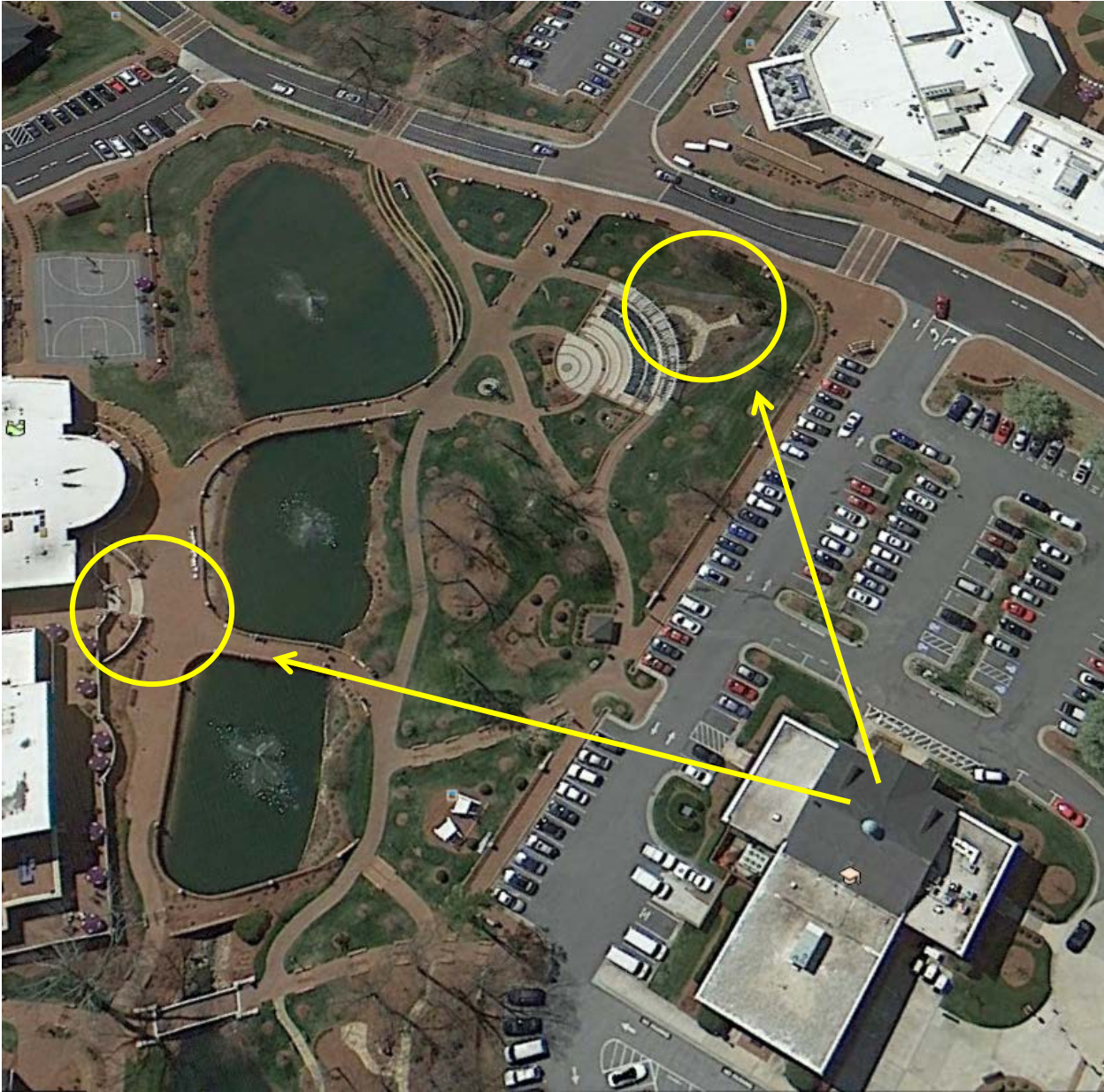
<b>PRIMARY RALLY POINT</b>	Assemble in front of the Norcross Graduate School.
<b>SECONDARY RALLY POINT</b>	Assemble to the side of Millis in the lower parking lot.



# Norcross Graduate School

In the event of a fire alarm proceed to the nearest exit and assemble at the designated rally point until given an **ALL CLEAR** from a University official or member of the High Point Fire Department.

<b>PRIMARY RALLY POINT</b>	Assemble near the amphitheater.
<b>SECONDARY RALLY POINT</b>	Assemble at the back of the Slane Center, past the large rocking chairs.



# North College Administration

In the event of a fire alarm proceed to the nearest exit and assemble at the designated rally point until given an **ALL CLEAR** from a University official or member of the High Point Fire Department.

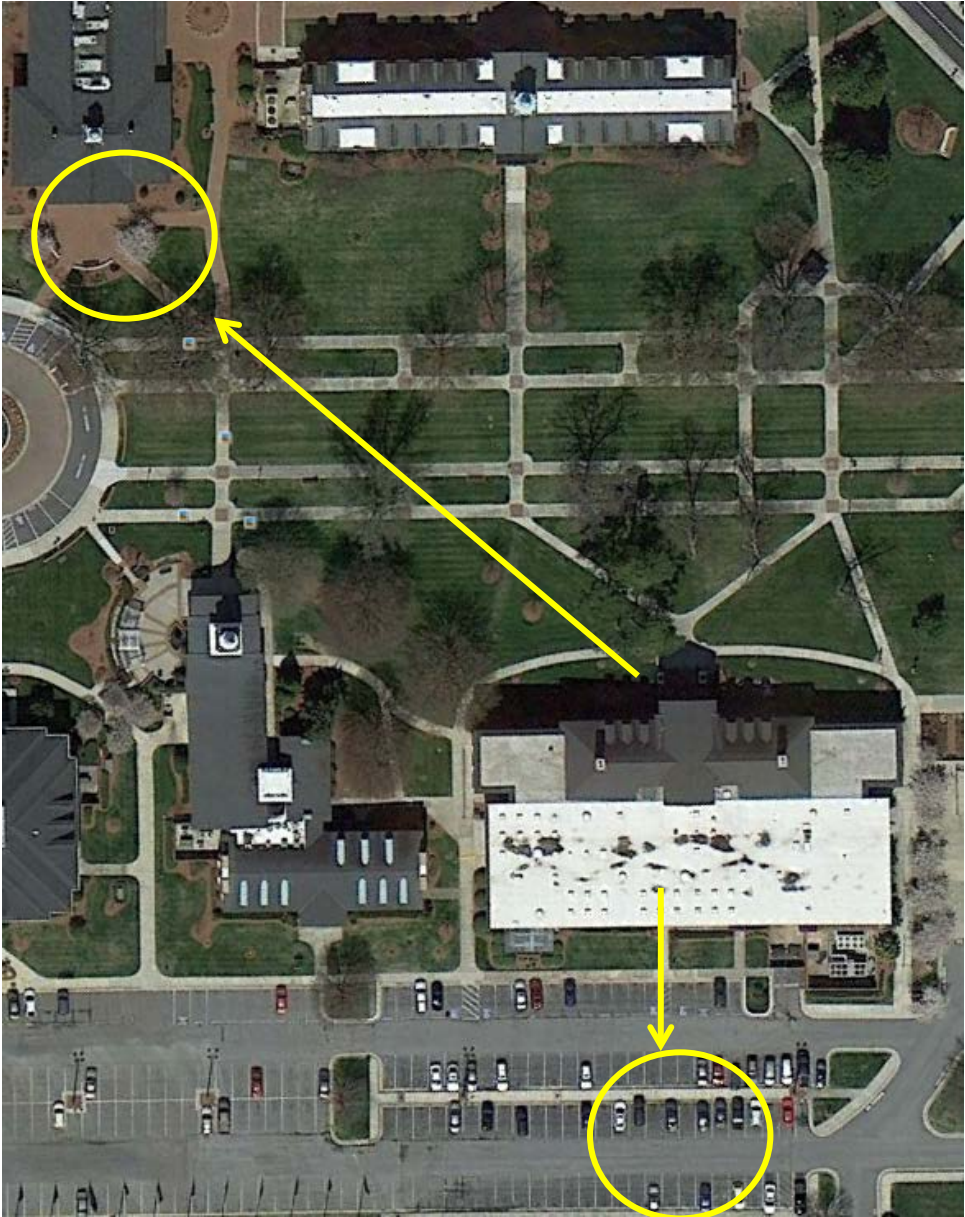
<b>PRIMARY RALLY POINT</b>	Assemble in front of the Silver Line Diner.
<b>SECONDARY RALLY POINT</b>	Assemble in the parking lot beside the Employee Wellness Center.



# Norton Hall

In the event of a fire alarm proceed to the nearest exit and assemble at the designated rally point until given an **ALL CLEAR** from a University official or member of the High Point Fire Department.

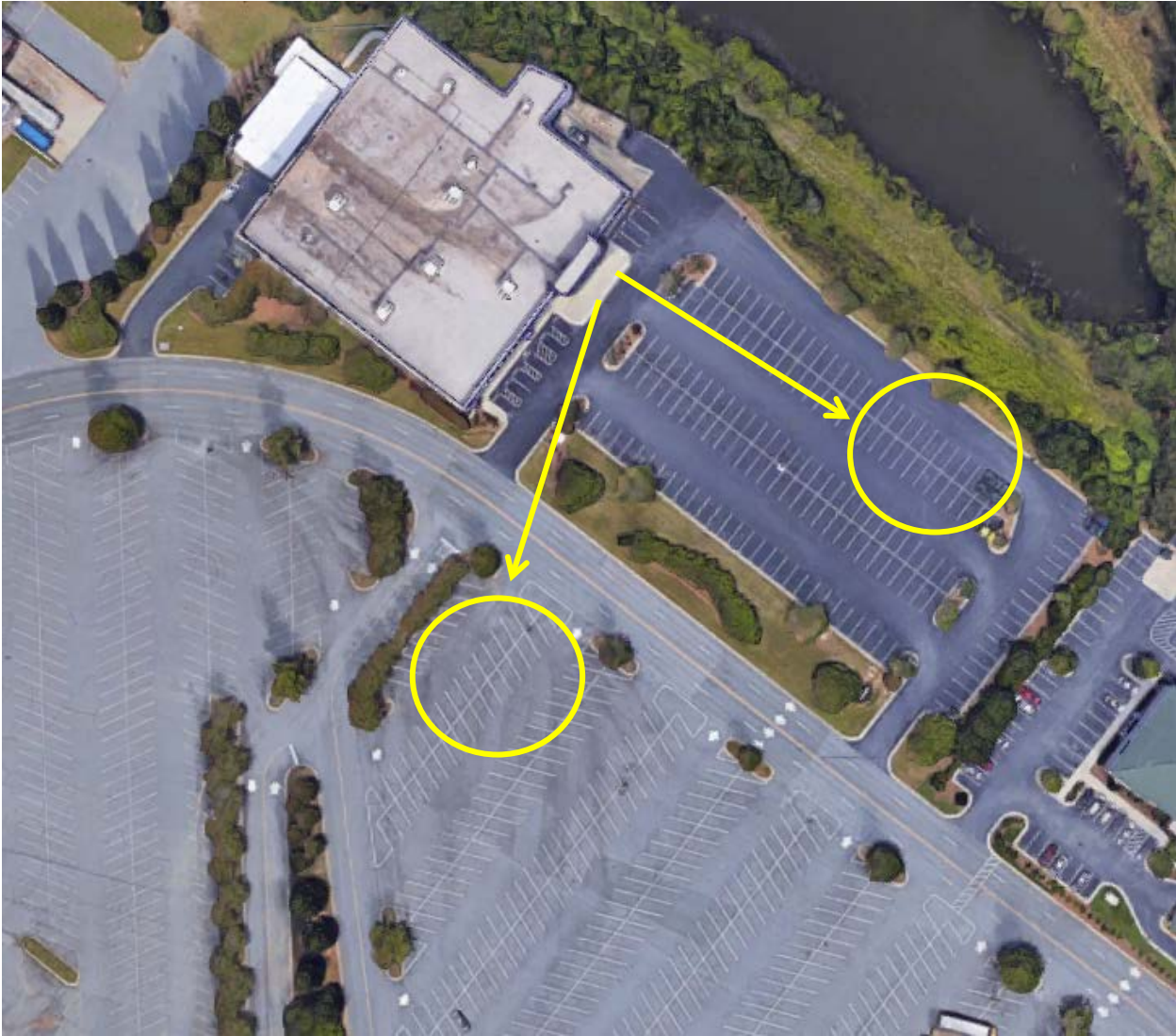
<b>PRIMARY RALLY POINT</b>	Assemble in front of Phillips School of Business.
<b>SECONDARY RALLY POINT</b>	Assemble in the Couch parking lot near the far end of the flag poles and CARE pole in the center of the lot.



# Oak Hollow Center

In the event of a fire alarm proceed to the nearest exit and assemble at the designated rally point until given an **ALL CLEAR** from a University official or member of the High Point Fire Department.

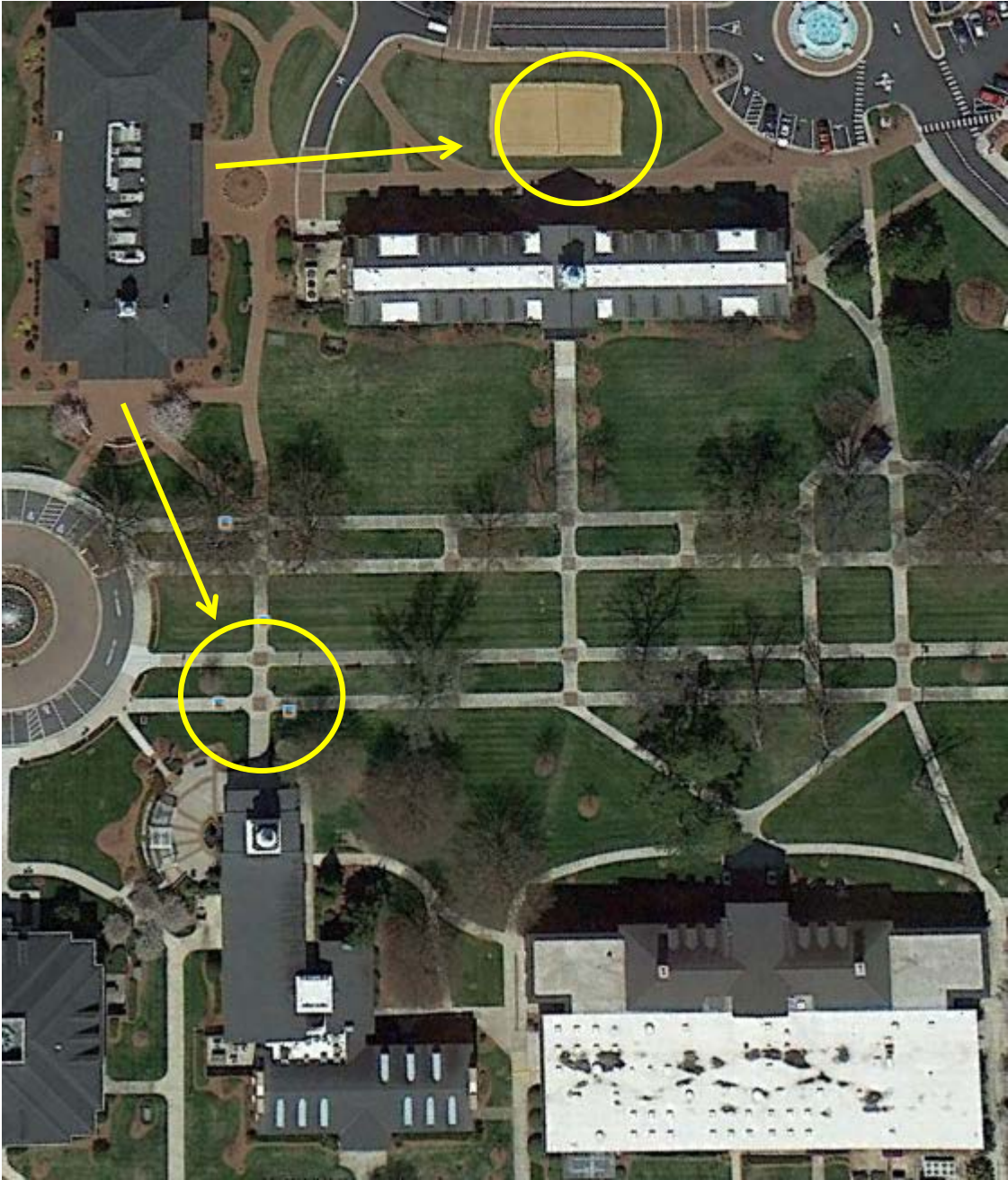
<b>PRIMARY RALLY POINT</b>	Assemble at the far end of the parking lot, away from the building.
<b>SECONDARY RALLY POINT</b>	Cross the street and assemble in the Oak Hollow Mall parking lot.



# Phillips School of Business

In the event of a fire alarm proceed to the nearest exit and assemble at the designated rally point until given an **ALL CLEAR** from a University official or member of the High Point Fire Department.

<b>PRIMARY RALLY POINT</b>	Assemble in front of Finch Hall, facing Slane Center.
<b>SECONDARY RALLY POINT</b>	Cross the lawn and assemble in front of Hayworth Chapel.



# Qubein School of Communication

In the event of a fire alarm proceed to the nearest exit and assemble at the designated rally point until given an **ALL CLEAR** from a University official or member of the High Point Fire Department.

<b>PRIMARY RALLY POINT</b>	Assemble in the parking lot towards Stout School of Education.
<b>SECONDARY RALLY POINT</b>	Cross Extraordinary Way and assemble next to the Wilson School of Commerce.

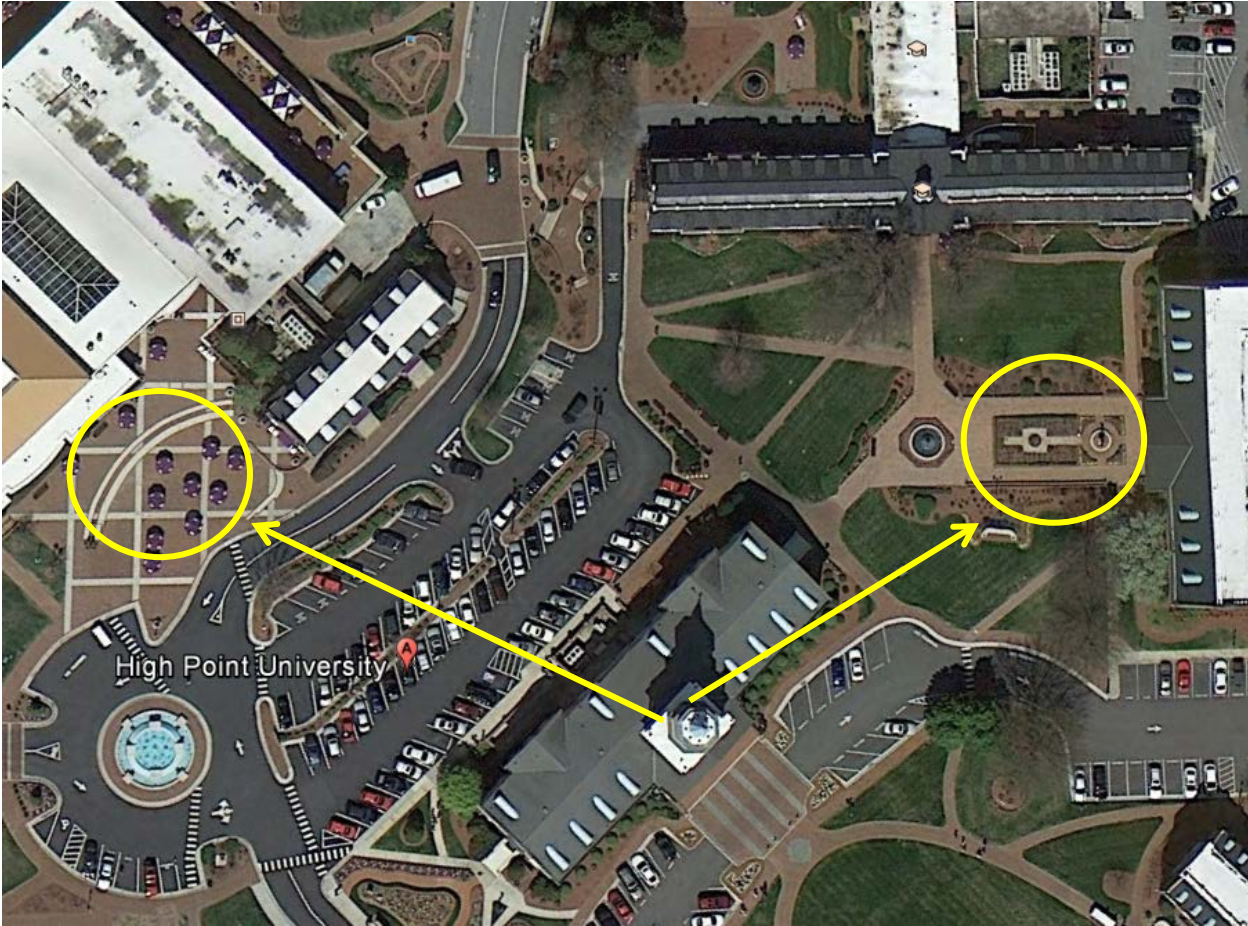




# Roberts Hall

In the event of a fire alarm proceed to the nearest exit and assemble at the designated rally point until given an **ALL CLEAR** from a University official or member of the High Point Fire Department.

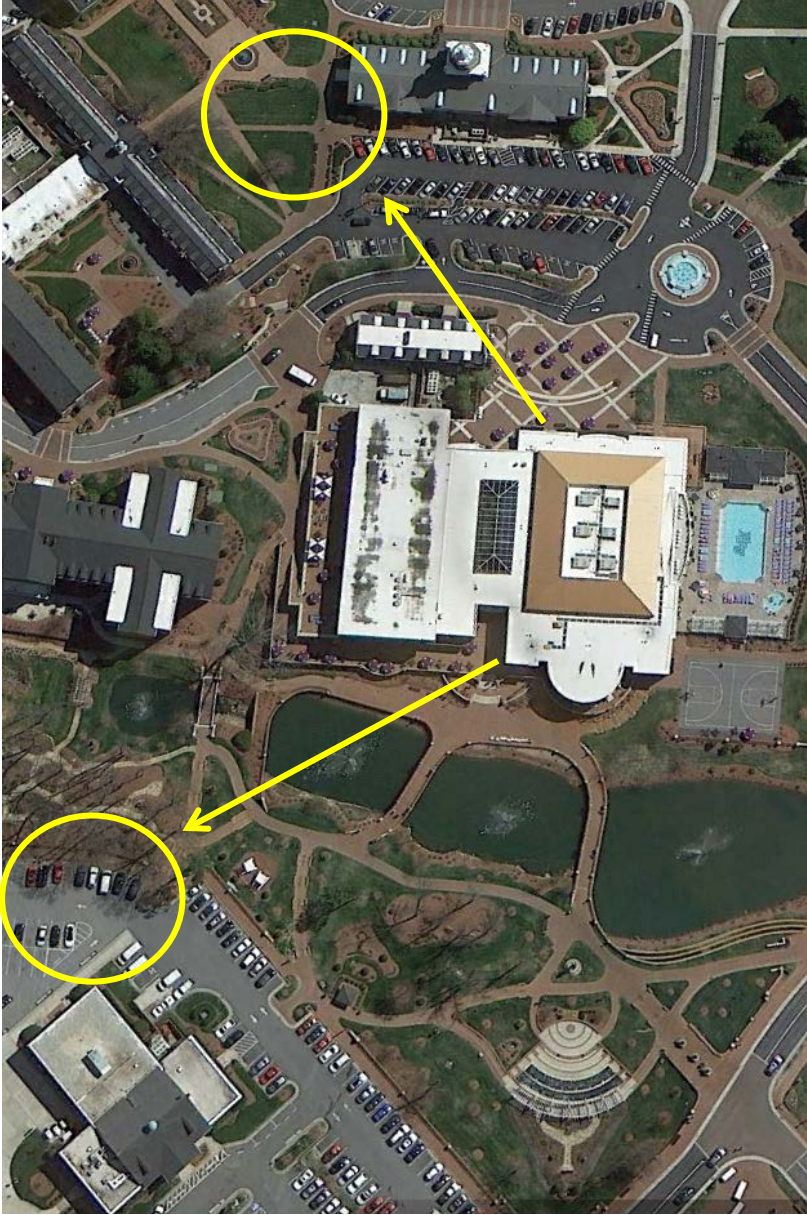
<b>PRIMARY RALLY POINT</b>	Assemble in front of Smith Library.
<b>SECONDARY RALLY POINT</b>	Assemble at the front entrance of the Slane Center.



# Slane Center

In the event of a fire alarm proceed to the nearest exit and assemble at the designated rally point until given an **ALL CLEAR** from a University official or member of the High Point Fire Department.

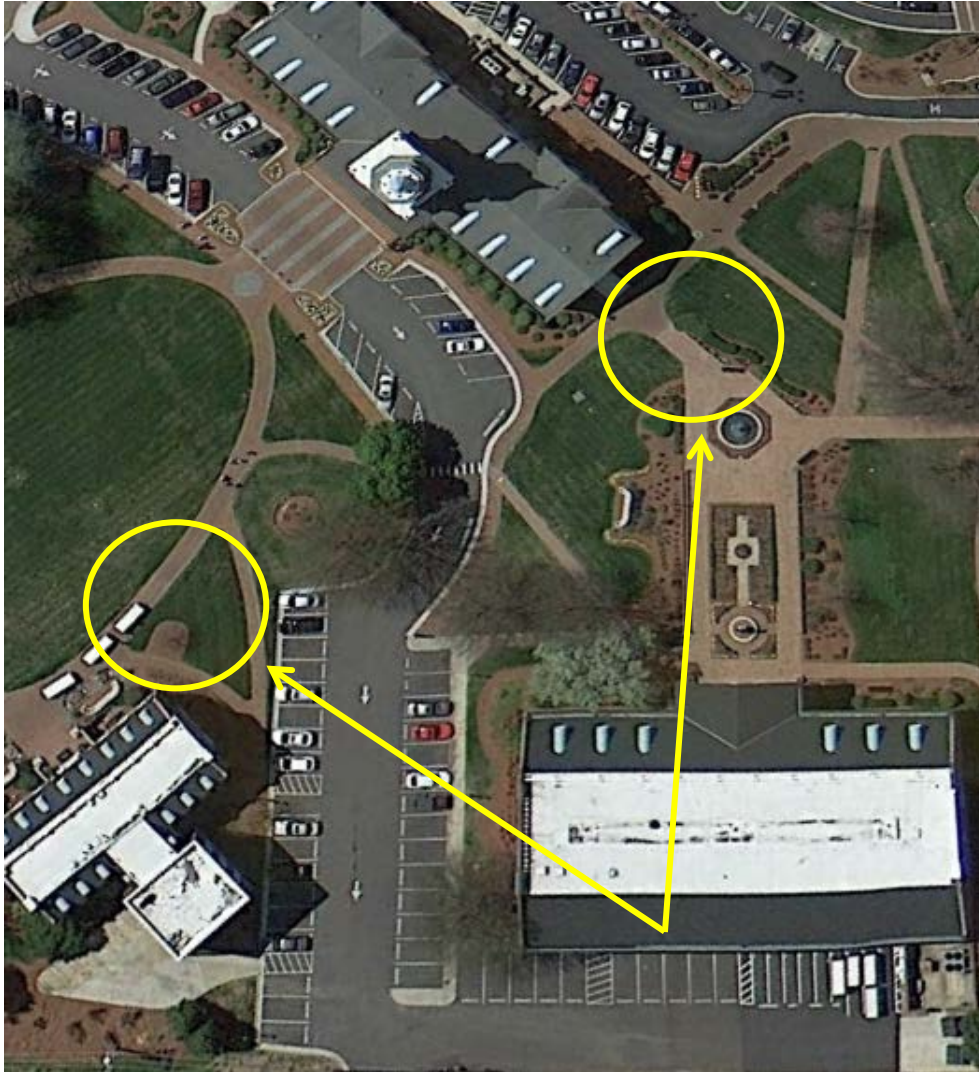
<b>PRIMARY RALLY POINT</b>	Assemble next to Roberts Hall in front of Smith Library.
<b>SECONDARY RALLY POINT</b>	Assemble at the back parking lot of Norcross Graduate School and the Millis Athletic Center.



## Smith Library

In the event of a fire alarm proceed to the nearest exit and assemble at the designated rally point until given an **ALL CLEAR** from a University official or member of the High Point Fire Department.

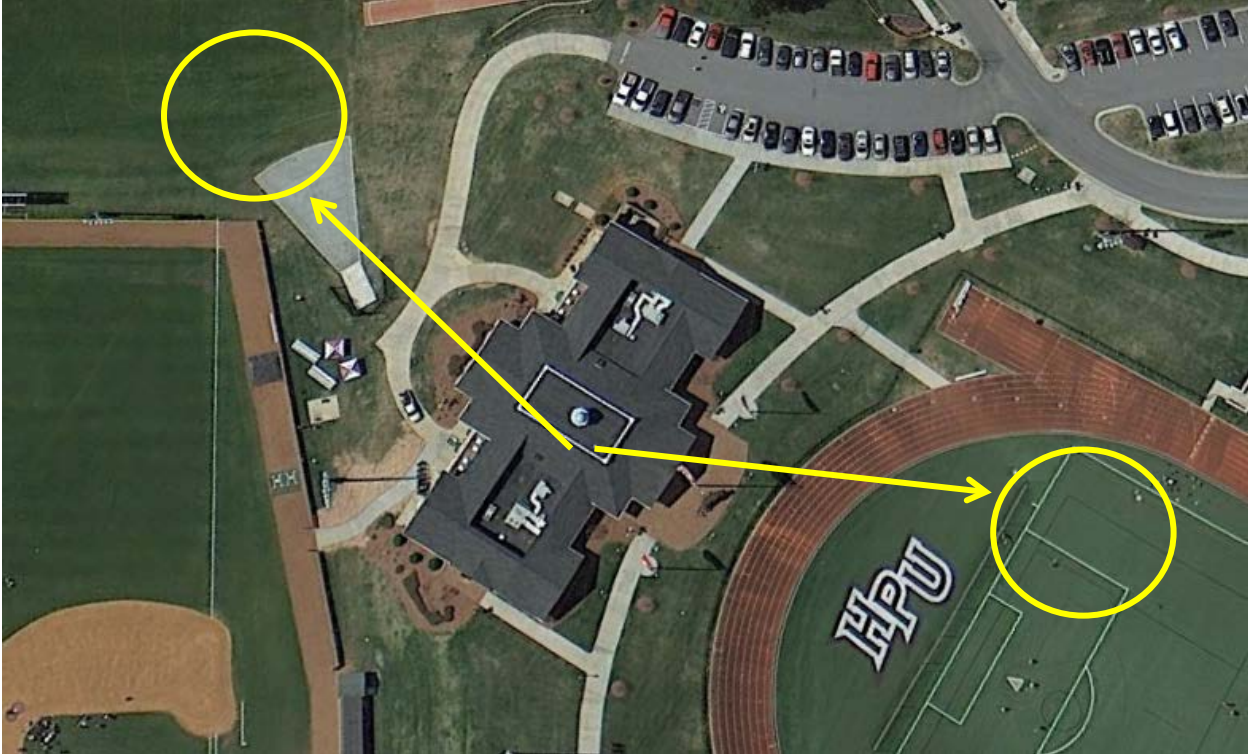
<b>PRIMARY RALLY POINT</b>	Assemble by the side entrance to Roberts Hall.
<b>SECONDARY RALLY POINT</b>	Assemble beside Wren Admissions.



# Steele Sports Center

In the event of a fire alarm proceed to the nearest exit and assemble at the designated rally point until given an **ALL CLEAR** from a University official or member of the High Point Fire Department.

<b>PRIMARY RALLY POINT</b>	Assemble on Vert Soccer Stadium.
<b>SECONDARY RALLY POINT</b>	Exit out the back door and assemble along the fence of Willard Baseball Stadium in the parking lot.



## Stout School of Education

In the event of a fire alarm proceed to the nearest exit and assemble at the designated rally point until given an **ALL CLEAR** from a University official or member of the High Point Fire Department.

<b>PRIMARY RALLY POINT</b>	Assemble in the back courtyard of the Qubein School of Communications (where the tables with umbrellas and fountain are located).
<b>SECONDARY RALLY POINT</b>	Assemble at the front door of the Greek Village Conference Center.



## Wanek Center

In the event of a fire alarm proceed to the nearest exit and assemble at the designated rally point until given an **ALL CLEAR** from a University official or member of the High Point Fire Department.

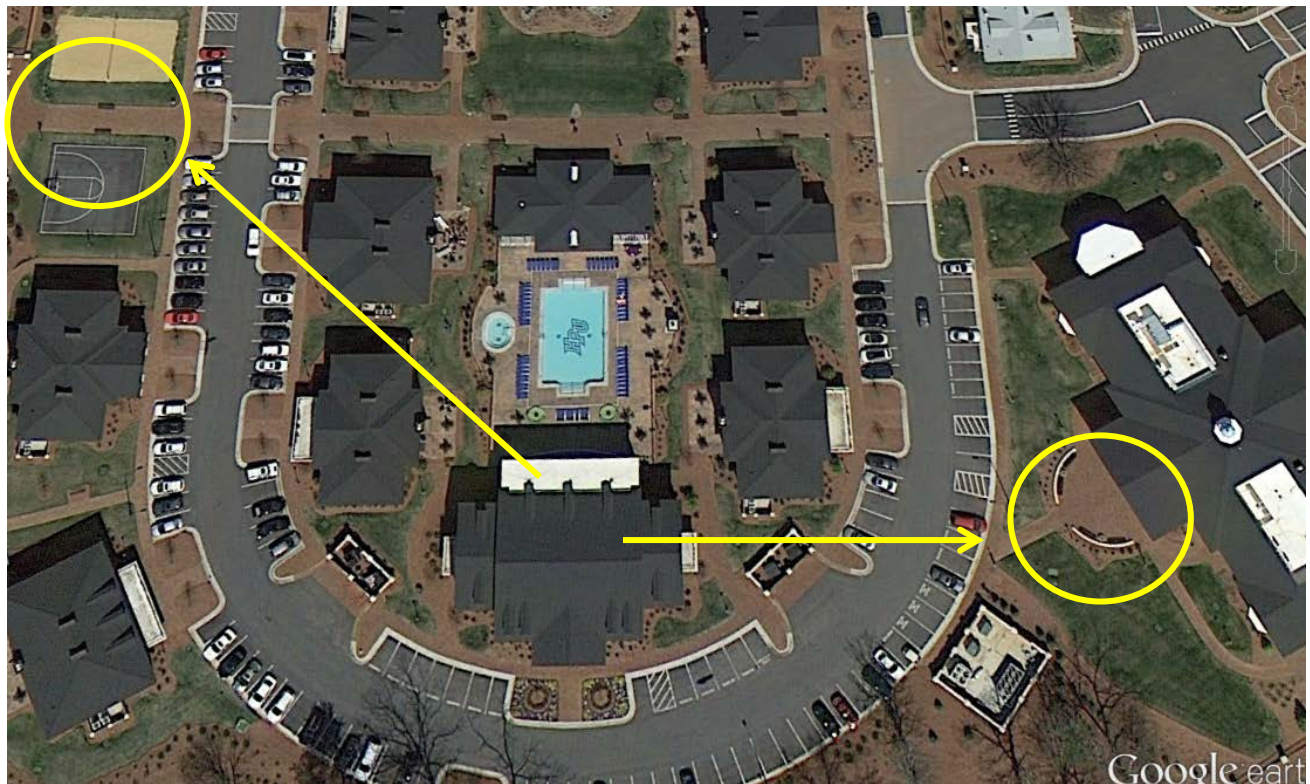
<b>PRIMARY RALLY POINT</b>	Cross Alumni Ave and assemble in the park behind Point Place apartments.
<b>SECONDARY RALLY POINT</b>	Cross Panther Drive and assemble near the amphitheater.



## Webb Conference Center

In the event of a fire alarm proceed to the nearest exit and assemble at the designated rally point until given an **ALL CLEAR** from a University official or member of the High Point Fire Department.

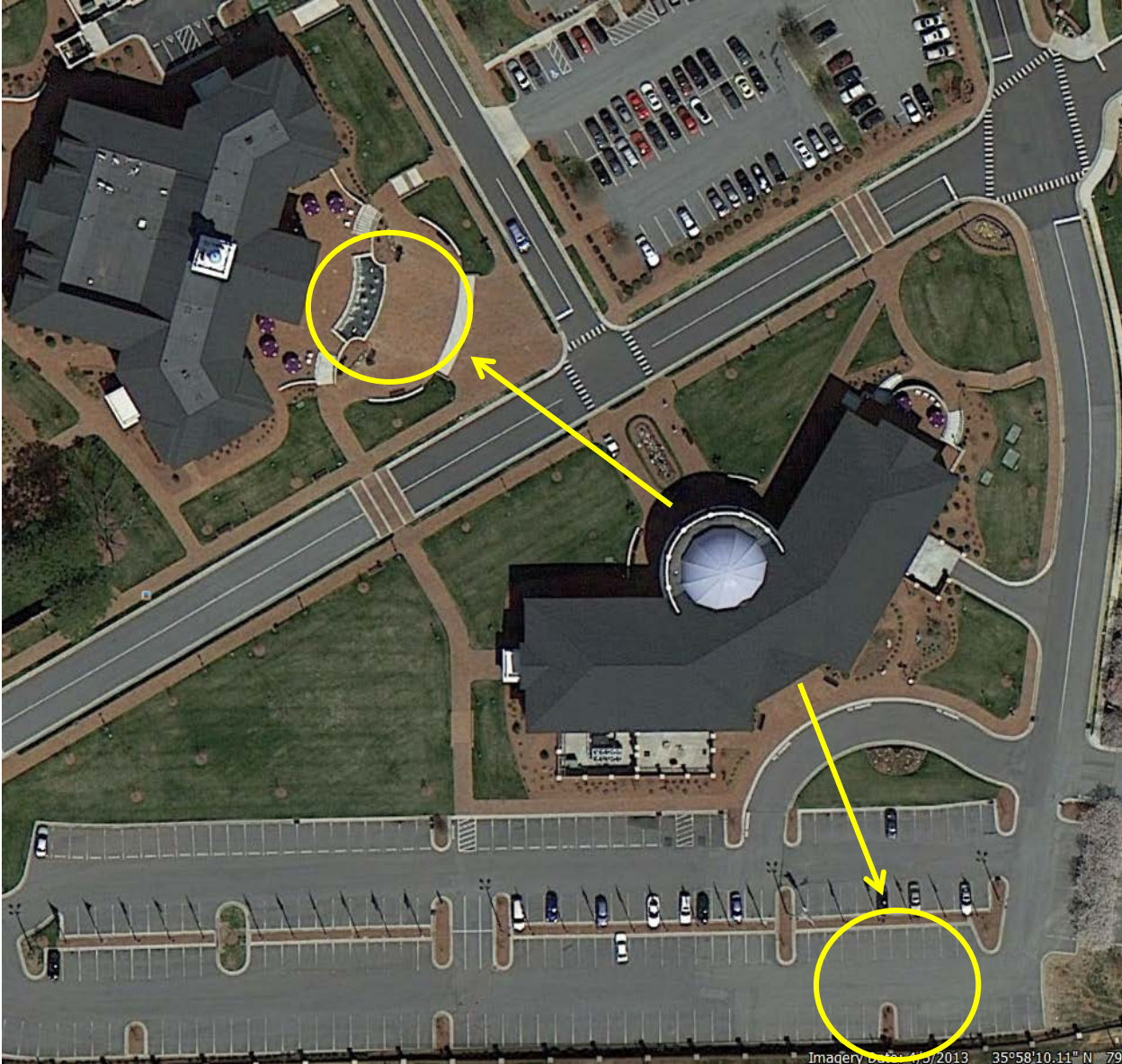
<b>PRIMARY RALLY POINT</b>	Assemble at the back of the Stout School of Education.
<b>SECONDARY RALLY POINT</b>	Assemble between the basketball court and the volleyball court in Greek Circle, at the bottom of the Grand Stairs.



# Wilson Family School of Commerce

In the event of a fire alarm proceed to the nearest exit and assemble at the designated rally point until given an **ALL CLEAR** from a University official or member of the High Point Fire Department.

<b>PRIMARY RALLY POINT</b>	Exit out the front and cross the street, assembling at the front porch of the Qubein School of Communication.
<b>SECONDARY RALLY POINT</b>	Exit the rear of the building, and assemble in the back of the parking lot.

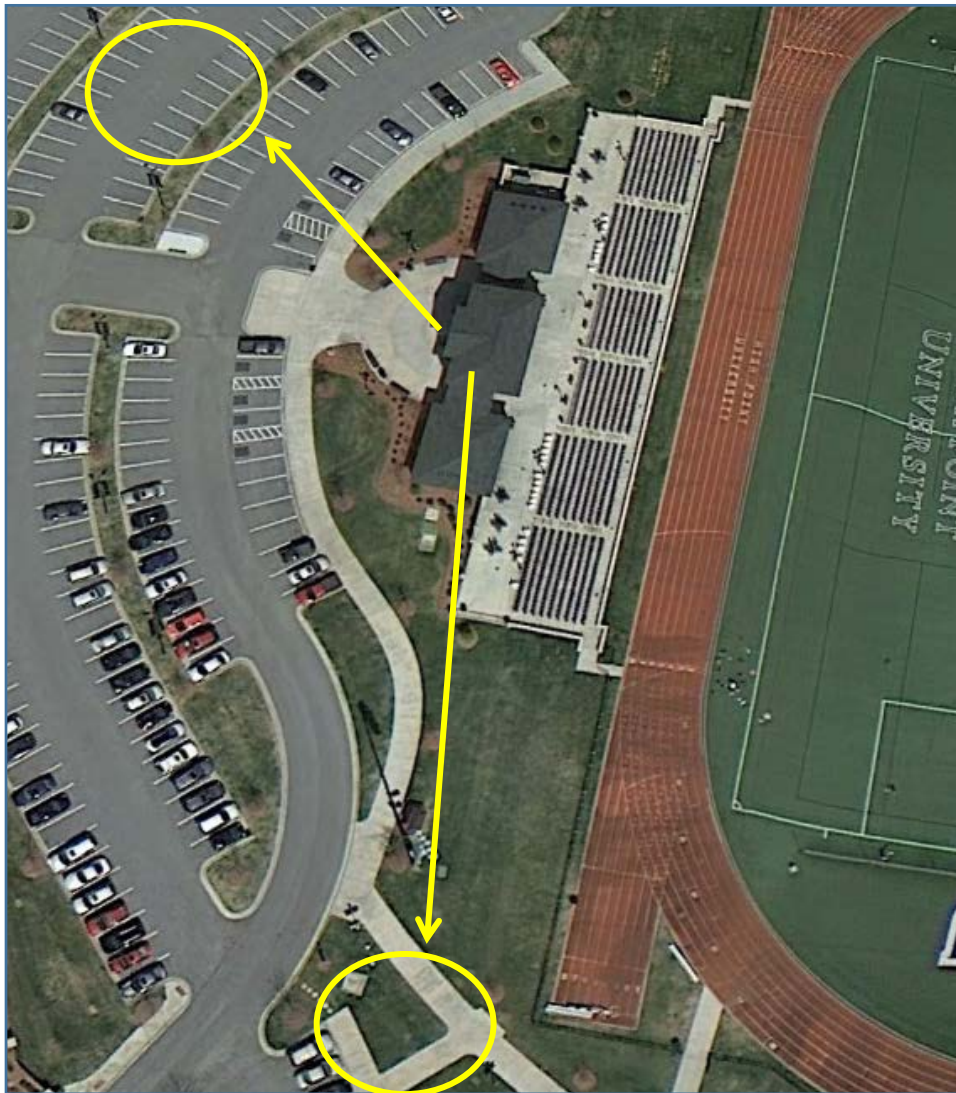




## Witcher Athletic Performance Center

In the event of a fire alarm proceed to the nearest exit and assemble at the designated rally point until given an **ALL CLEAR** from a University official or member of the High Point Fire Department.

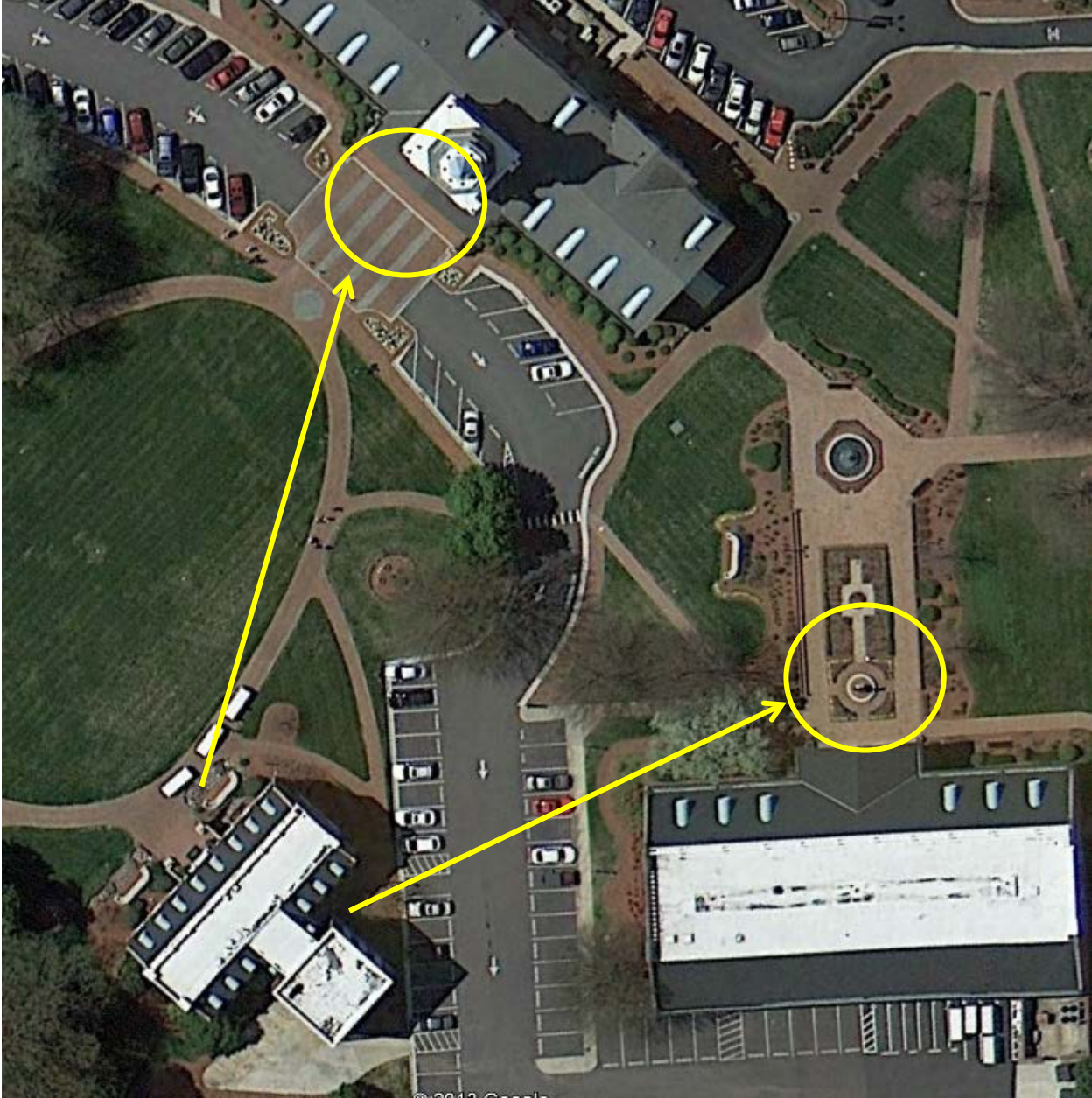
<b>PRIMARY RALLY POINT</b>	Exit the front of the building and move to the parking lot along Panther Drive.
<b>SECONDARY RALLY POINT</b>	Exit out the side and rear of the building, and assemble near Steele Center.



# Wren Admissions Building

In the event of a fire alarm proceed to the nearest exit and assemble at the designated rally point until given an **ALL CLEAR** from a University official or member of the High Point Fire Department.

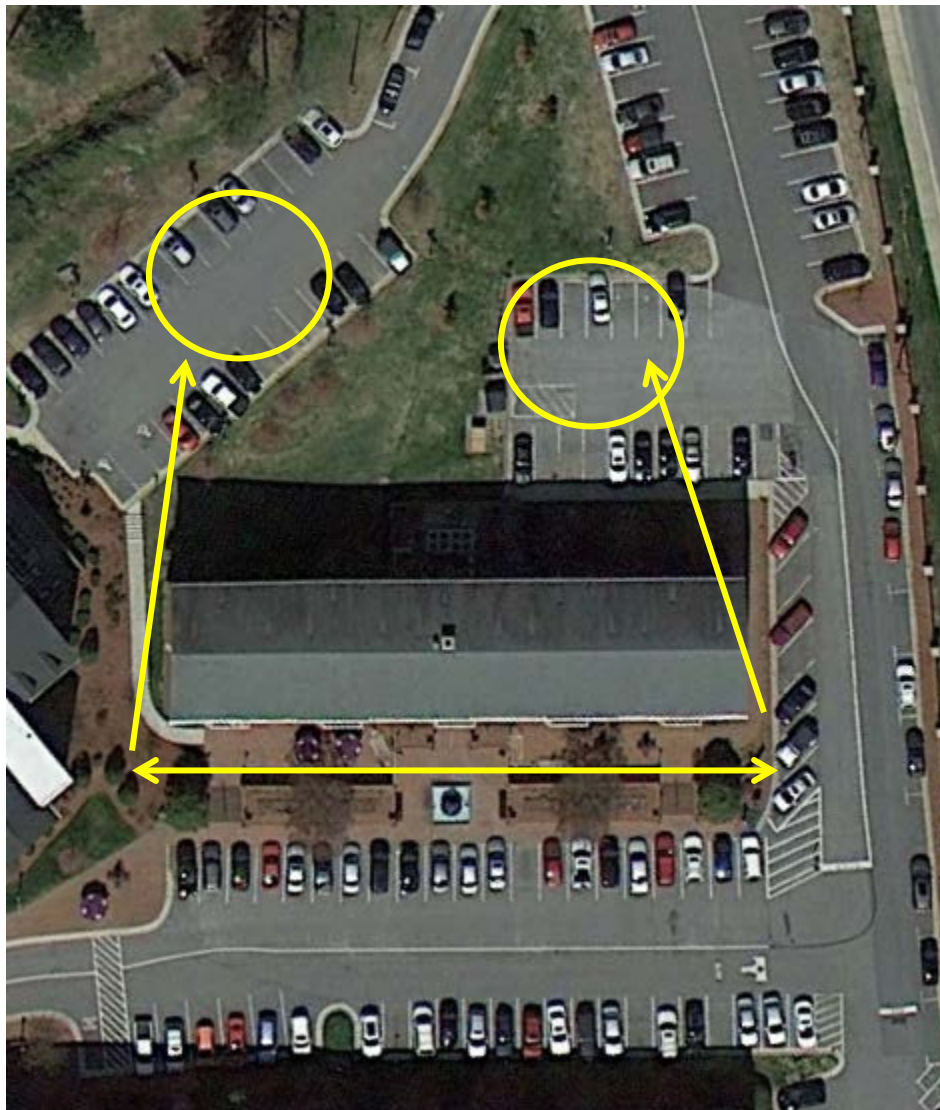
<b>PRIMARY RALLY POINT</b>	Assemble at the front steps of Roberts Hall.
<b>SECONDARY RALLY POINT</b>	Assemble by the front door of Smith Library in the courtyard.



## Belk Hall

In the event of a fire alarm proceed to the nearest exit and assemble at the designated rally point until given an **ALL CLEAR** from a University official or member of the High Point Fire Department.

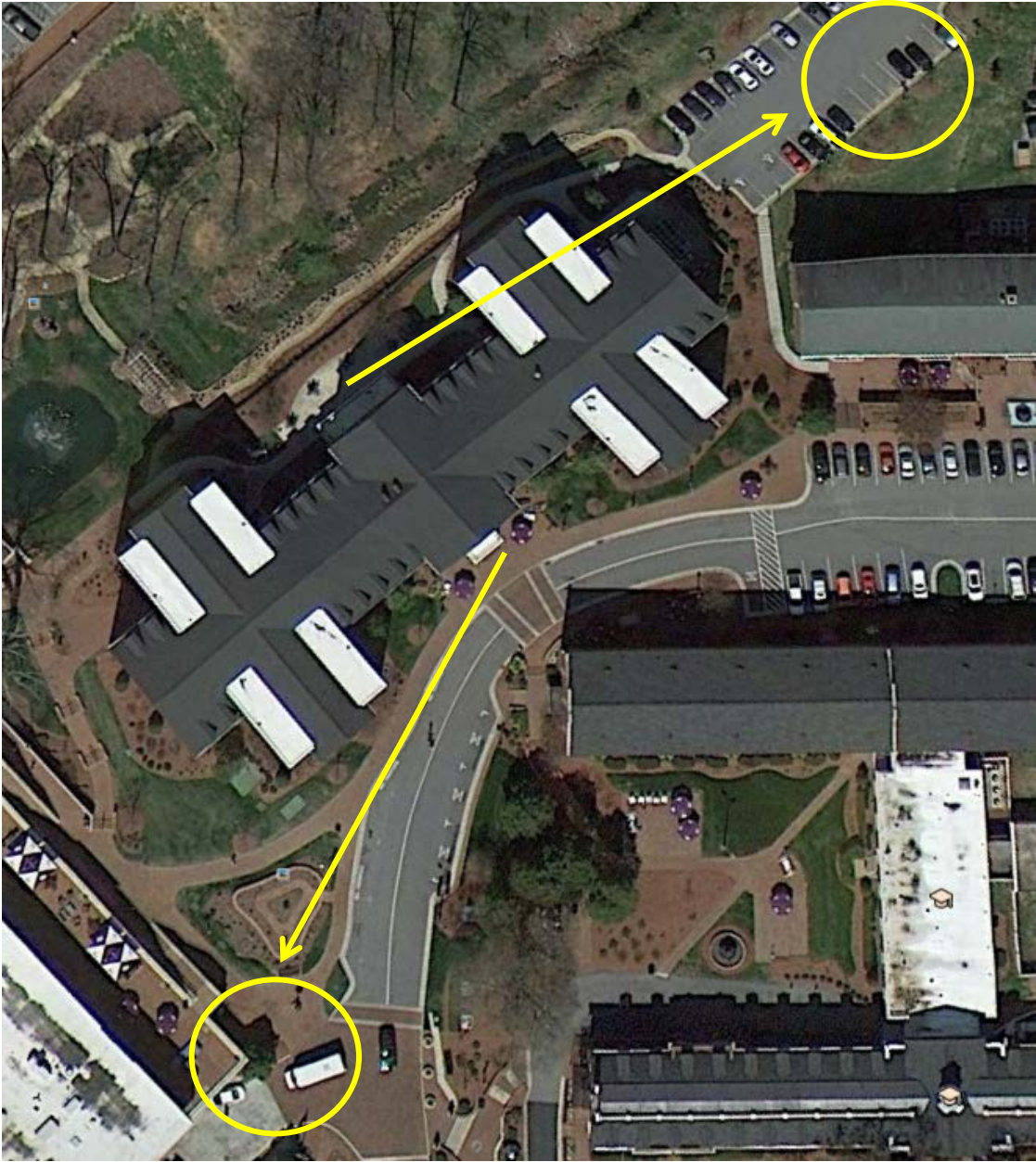
<b>PRIMARY RALLY POINT</b>	Exit the front of the building and move left, around to the rear of Belk Hall.
<b>SECONDARY RALLY POINT</b>	Exit out the front and then move right, around to the rear of Belk Hall.



# Blessing Hall

In the event of a fire alarm proceed to the nearest exit and assemble at the designated rally point until given an **ALL CLEAR** from a University official or member of the High Point Fire Department.

<b>PRIMARY RALLY POINT</b>	Exit out the front door to the right, and assemble against the Slane Center.
<b>SECONDARY RALLY POINT</b>	Exit out the back door and proceed straight ahead, assembling behind Belk Hall.



# Caffey Hall

In the event of a fire alarm proceed to the nearest exit and assemble at the designated rally point until given an **ALL CLEAR** from a University official or member of the High Point Fire Department.

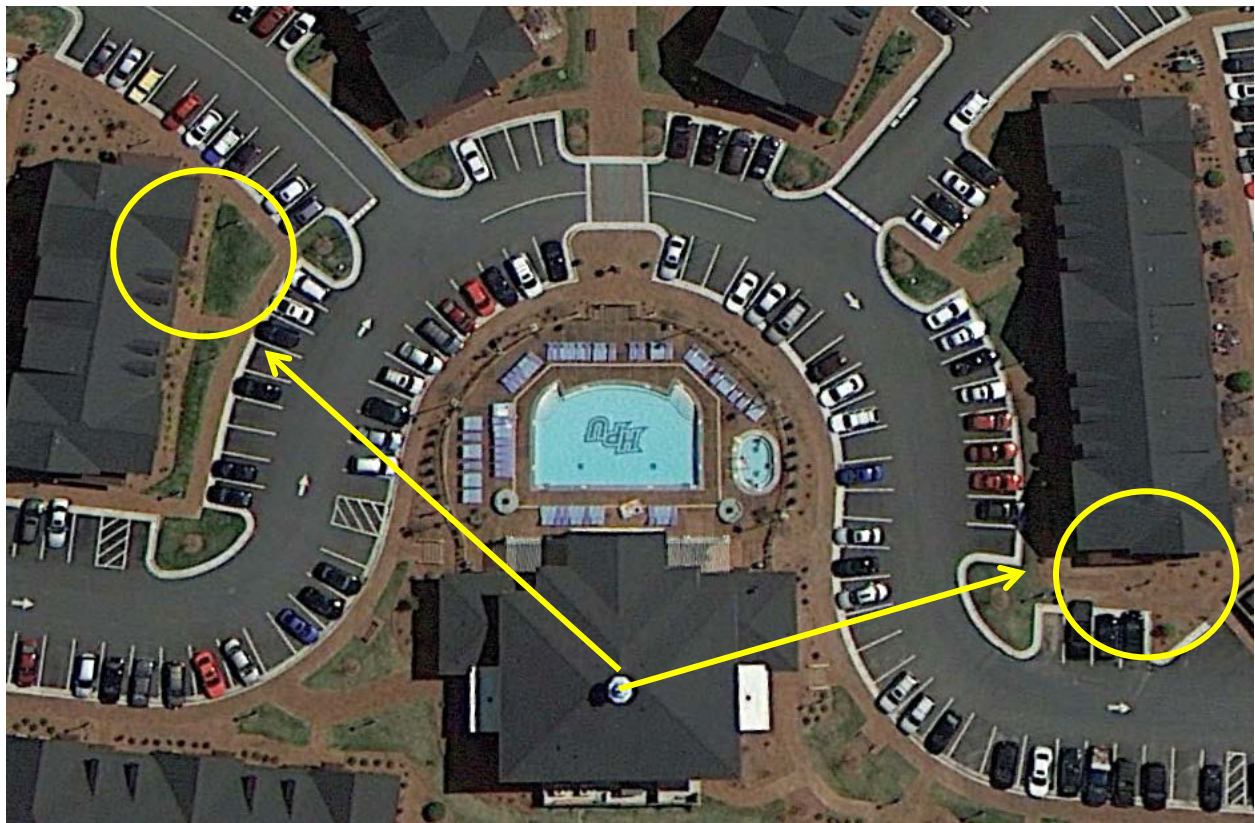
<b>PRIMARY RALLY POINT</b>	Assemble at the north end of the parking lot behind the dorm.
<b>SECONDARY RALLY POINT</b>	Assemble at the south end of the parking lot behind the dorm.



## Centennial Square 1 – Samuel Commons

In the event of a fire alarm proceed to the nearest exit and assemble at the designated rally point until given an **ALL CLEAR** from a University official or member of the High Point Fire Department.

<b>PRIMARY RALLY POINT</b>	Cross the street and assemble in front of 820-826 Centennial Square.
<b>SECONDARY RALLY POINT</b>	Cross the street and assemble between 780-790 Centennial Square.



## Centennial Square 1 – Townhomes

In the event of a fire alarm proceed to the nearest exit and assemble at the designated rally point until given an **ALL CLEAR** from a University official or member of the High Point Fire Department.

<b>PRIMARY RALLY POINT</b>	Assemble at the Club House.
<b>SECONDARY RALLY POINT</b>	Assemble by the steps to Greek Village.

## Centennial Square 2 – Boles Commons

In the event of a fire alarm proceed to the nearest exit and assemble at the designated rally point until given an **ALL CLEAR** from a University official or member of the High Point Fire Department.

<b>PRIMARY RALLY POINT</b>	Assemble in the lower parking lot in Centennial Square 2.
<b>SECONDARY RALLY POINT</b>	Assemble by the amphitheater near Cottrell.



## Centennial Square 2 - Townhomes

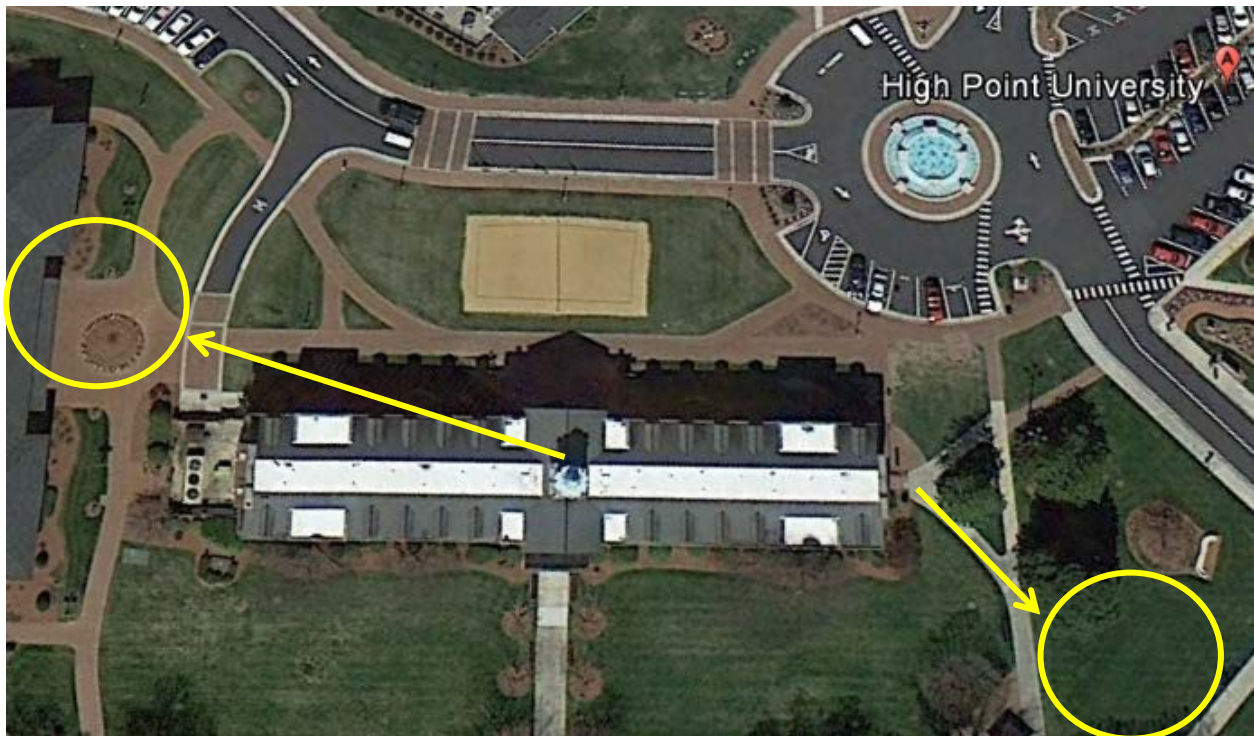
In the event of a fire alarm proceed to the nearest exit and assemble at the designated rally point until given an **ALL CLEAR** from a University official or member of the High Point Fire Department.

<b>PRIMARY RALLY POINT</b>	Assemble at the Club House.
<b>SECONDARY RALLY POINT</b>	Assemble by the amphitheater near Cottrell.

## Finch Hall

In the event of a fire alarm proceed to the nearest exit and assemble at the designated rally point until given an **ALL CLEAR** from a University official or member of the High Point Fire Department.

<b>PRIMARY RALLY POINT</b>	Exit the door facing Roberts Hall and assemble in the area against Extraordinary Way.
<b>SECONDARY RALLY POINT</b>	Exit the front door and assemble in front of Phillips School of Business.





## 710 Greek Village

In the event of a fire alarm proceed to the nearest exit and assemble at the designated rally point until given an **ALL CLEAR** from a University official or member of the High Point Fire Department.

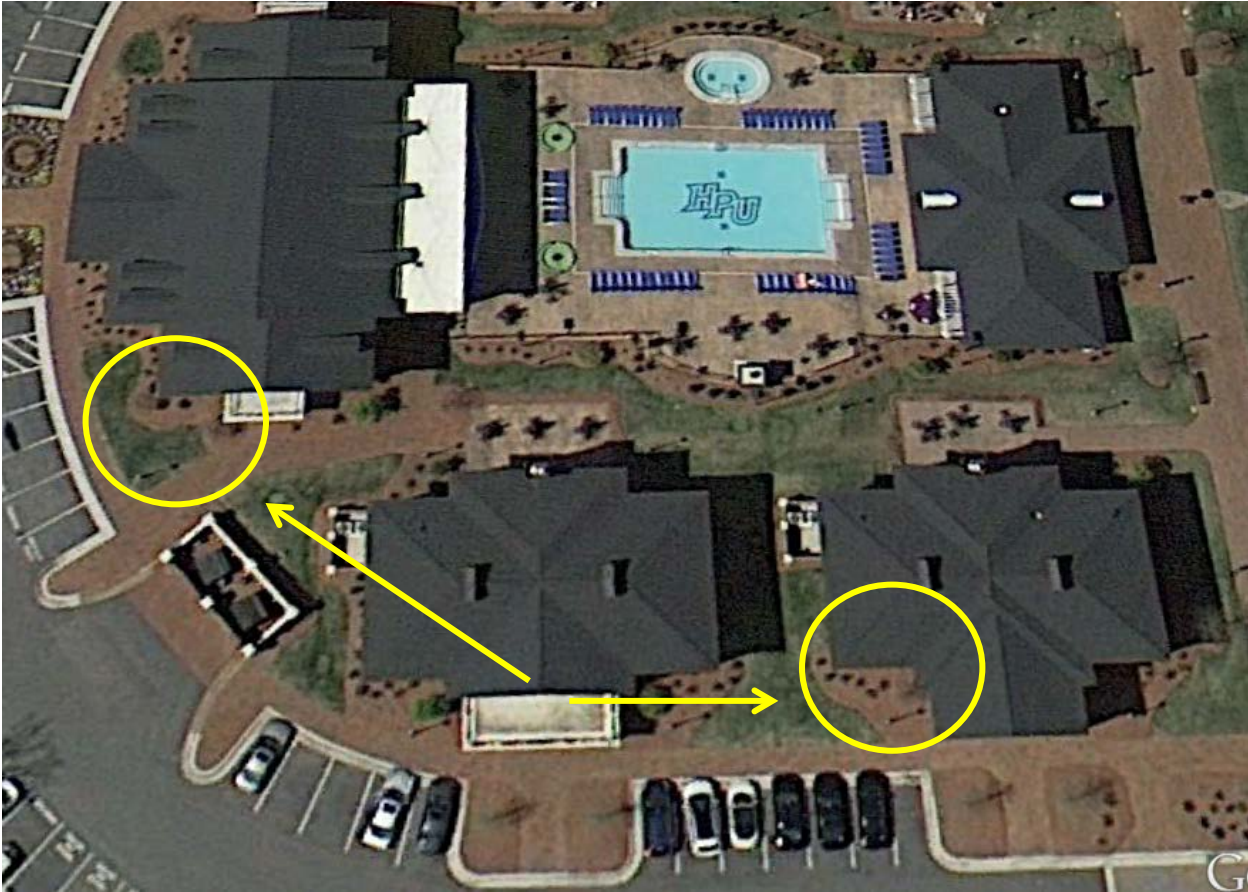
<b>PRIMARY RALLY POINT</b>	Assemble to the right in side yard of 730.
<b>SECONDARY RALLY POINT</b>	Assemble in left side yard in courtyard by 850.



# 730 Greek Village

In the event of a fire alarm proceed to the nearest exit and assemble at the designated rally point until given an **ALL CLEAR** from a University official or member of the High Point Fire Department.

<b>PRIMARY RALLY POINT</b>	Assemble to the left in side yard of 710.
<b>SECONDARY RALLY POINT</b>	Assemble in the side yard near Meeting House.



# 765 Greek Village

In the event of a fire alarm proceed to the nearest exit and assemble at the designated rally point until given an **ALL CLEAR** from a University official or member of the High Point Fire Department.

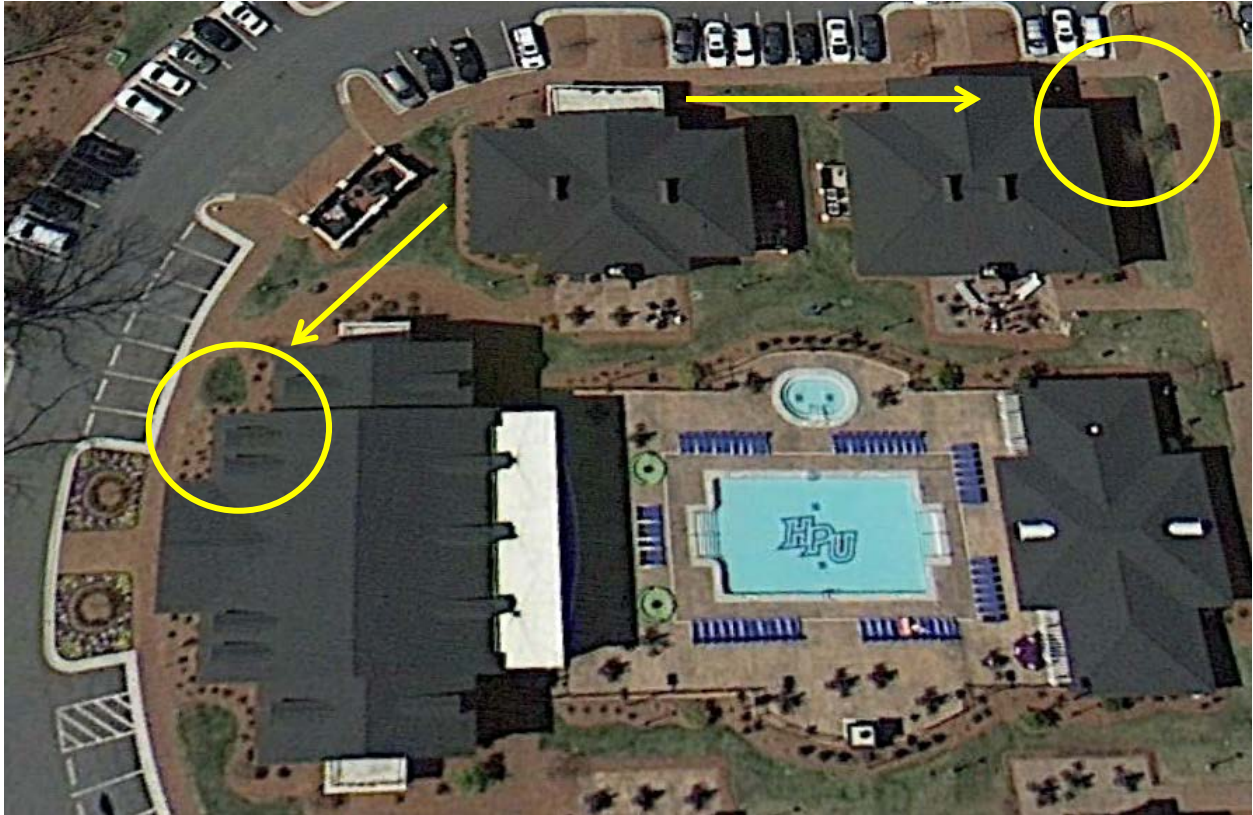
<b>PRIMARY RALLY POINT</b>	Assemble to the left in side yard of 785.
<b>SECONDARY RALLY POINT</b>	Assemble out and to the right, against the parking lot.



## 770 Greek Village

In the event of a fire alarm proceed to the nearest exit and assemble at the designated rally point until given an **ALL CLEAR** from a University official or member of the High Point Fire Department.

<b>PRIMARY RALLY POINT</b>	Assemble to the right in side yard of 790.
<b>SECONDARY RALLY POINT</b>	Assemble in side yard near Meeting House.



## 785 Greek Village

In the event of a fire alarm proceed to the nearest exit and assemble at the designated rally point until given an **ALL CLEAR** from a University official or member of the High Point Fire Department.

<b>PRIMARY RALLY POINT</b>	Assemble to the right in side yard of 765.
<b>SECONDARY RALLY POINT</b>	Assemble in left side yard by the basketball court and volleyball court.



## 790 Greek Village

In the event of a fire alarm proceed to the nearest exit and assemble at the designated rally point until given an **ALL CLEAR** from a University official or member of the High Point Fire Department.

<b>PRIMARY RALLY POINT</b>	Assemble to the left in side yard of 770.
<b>SECONDARY RALLY POINT</b>	Assemble in right side yard in courtyard by 810.



## 810 Greek Village

In the event of a fire alarm proceed to the nearest exit and assemble at the designated rally point until given an **ALL CLEAR** from a University official or member of the High Point Fire Department.

<b>PRIMARY RALLY POINT</b>	Assemble to the right in side yard of 830.
<b>SECONDARY RALLY POINT</b>	Assemble in left side yard in courtyard.



# 825 Greek Village

In the event of a fire alarm proceed to the nearest exit and assemble at the designated rally point until given an **ALL CLEAR** from a University official or member of the High Point Fire Department.

<b>PRIMARY RALLY POINT</b>	Assemble to the left in side yard of 845.
<b>SECONDARY RALLY POINT</b>	Assemble in right side yard in empty lot by volleyball court and basketball court.





# 830 Greek Village

In the event of a fire alarm proceed to the nearest exit and assemble at the designated rally point until given an **ALL CLEAR** from a University official or member of the High Point Fire Department.

<b>PRIMARY RALLY POINT</b>	Assemble to the left in side yard of 810.
<b>SECONDARY RALLY POINT</b>	Cross the street to the front yard of 845.



# 845 Greek Village

In the event of a fire alarm proceed to the nearest exit and assemble at the designated rally point until given an **ALL CLEAR** from a University official or member of the High Point Fire Department.

<b>PRIMARY RALLY POINT</b>	Assemble in front of 830.
<b>SECONDARY RALLY POINT</b>	Assemble in front of 825.



## 870 Greek Village

In the event of a fire alarm proceed to the nearest exit and assemble at the designated rally point until given an **ALL CLEAR** from a University official or member of the High Point Fire Department.

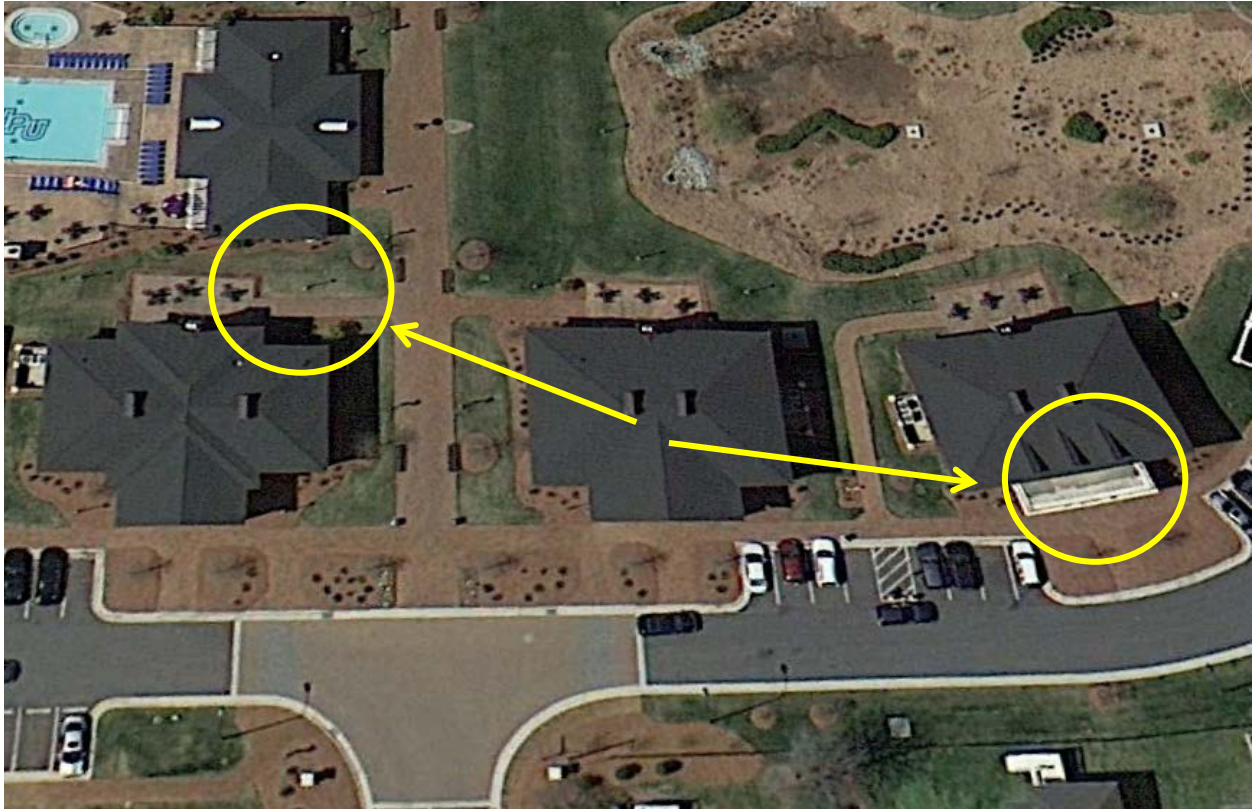
<b>PRIMARY RALLY POINT</b>	Assemble straight across the street in the grass.
<b>SECONDARY RALLY POINT</b>	Assemble to the right in front of 890.



## 890 Greek Village

In the event of a fire alarm proceed to the nearest exit and assemble at the designated rally point until given an **ALL CLEAR** from a University official or member of the High Point Fire Department.

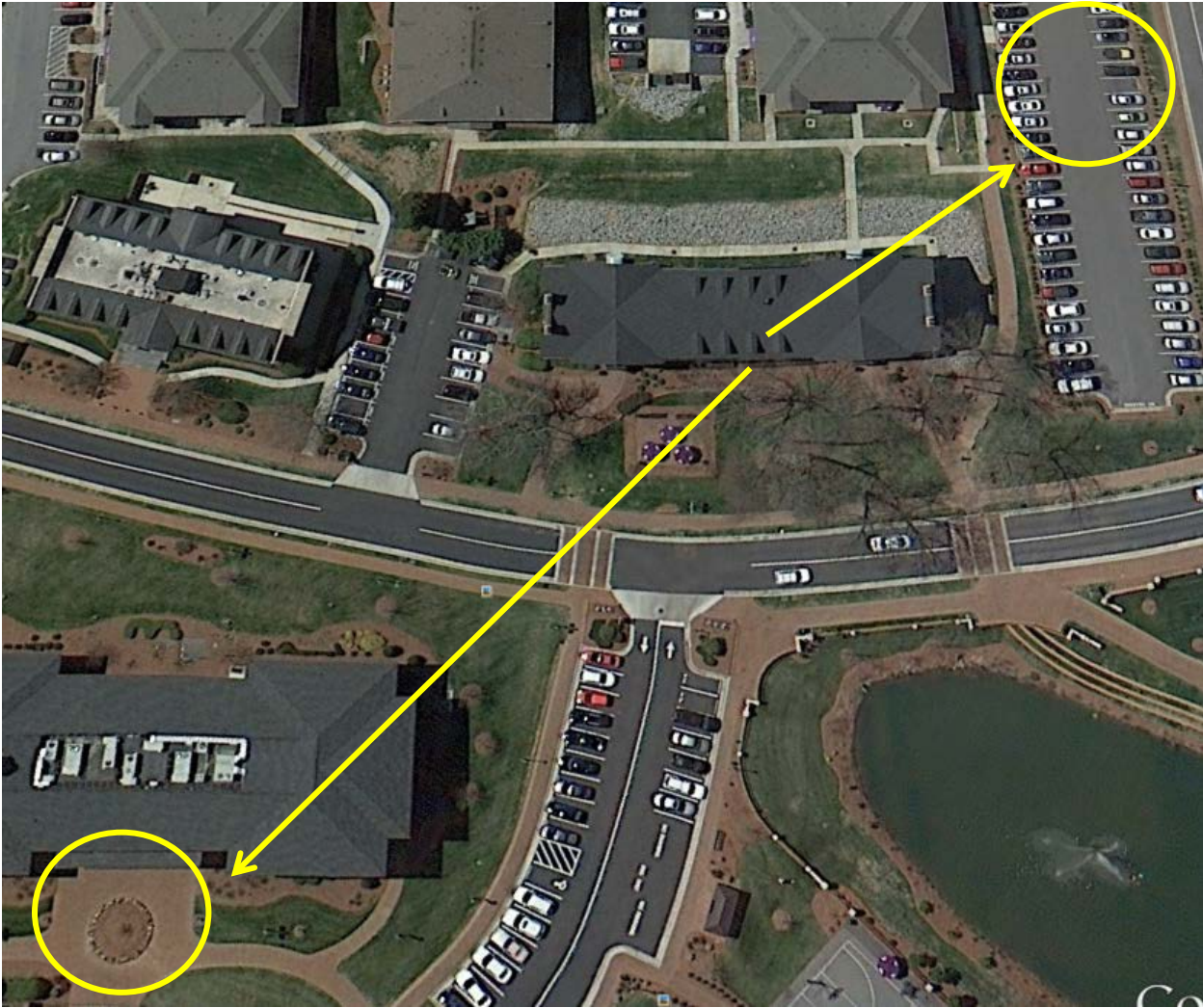
<b>PRIMARY RALLY POINT</b>	Assemble to the left in front of 870.
<b>SECONDARY RALLY POINT</b>	Assemble in right side yard in courtyard.



# Millis Residence Hall

In the event of a fire alarm proceed to the nearest exit and assemble at the designated rally point until given an **ALL CLEAR** from a University official or member of the High Point Fire Department.

<b>PRIMARY RALLY POINT</b>	Exit the building and assemble in the park (old parking lot) adjacent to Panther Drive.
<b>SECONDARY RALLY POINT</b>	Exit the front and cross Panther Drive. Assemble at the end of Phillips Hall.



# North College Court

In the event of a fire alarm proceed to the nearest exit and assemble at the designated rally point until given an **ALL CLEAR** from a University official or member of the High Point Fire Department.

<b>PRIMARY RALLY POINT</b>	Assemble behind North College Administration at the basketball court.
<b>SECONDARY RALLY POINT</b>	Exit the rear of the Court and assemble along the fence facing North University Pkwy.



## North College Terrace

In the event of a fire alarm proceed to the nearest exit and assemble at the designated rally point until given an **ALL CLEAR** from a University official or member of the High Point Fire Department.

<b>PRIMARY RALLY POINT</b>	Assemble behind the Terrace towards North College Townhomes.
<b>SECONDARY RALLY POINT</b>	Assemble at the parking lot towards North College townhomes, along the fence adjacent to North University Pkwy.



## North College Townhomes

In the event of a fire alarm proceed to the nearest exit and assemble at the designated rally point until given an **ALL CLEAR** from a University official or member of the High Point Fire Department.

<b>PRIMARY RALLY POINT</b>	Assemble behind the Court, by the fence along North University Pkwy.
<b>SECONDARY RALLY POINT</b>	Assemble by the basketball court at the Employee Wellness Center.





## 806 Point Place

In the event of a fire alarm proceed to the nearest exit and assemble at the designated rally point until given an **ALL CLEAR** from a University official or member of the High Point Fire Department.

<b>PRIMARY RALLY POINT</b>	Assemble in the back parking lot adjacent to Wilson Hall.
<b>SECONDARY RALLY POINT</b>	Cross Point Place and assemble in the back porch and parking lot area of Q-Comm.



## 812 Point Place

In the event of a fire alarm proceed to the nearest exit and assemble at the designated rally point until given an **ALL CLEAR** from a University official or member of the High Point Fire Department.

<b>PRIMARY RALLY POINT</b>	Cross Point Place and assemble in the back parking lot of York Hall.
<b>SECONDARY RALLY POINT</b>	Cross Point Place and assemble in the back porch area by the parking lot of Q-Comm.



# 818 Point Place

In the event of a fire alarm proceed to the nearest exit and assemble at the designated rally point until given an **ALL CLEAR** from a University official or member of the High Point Fire Department.

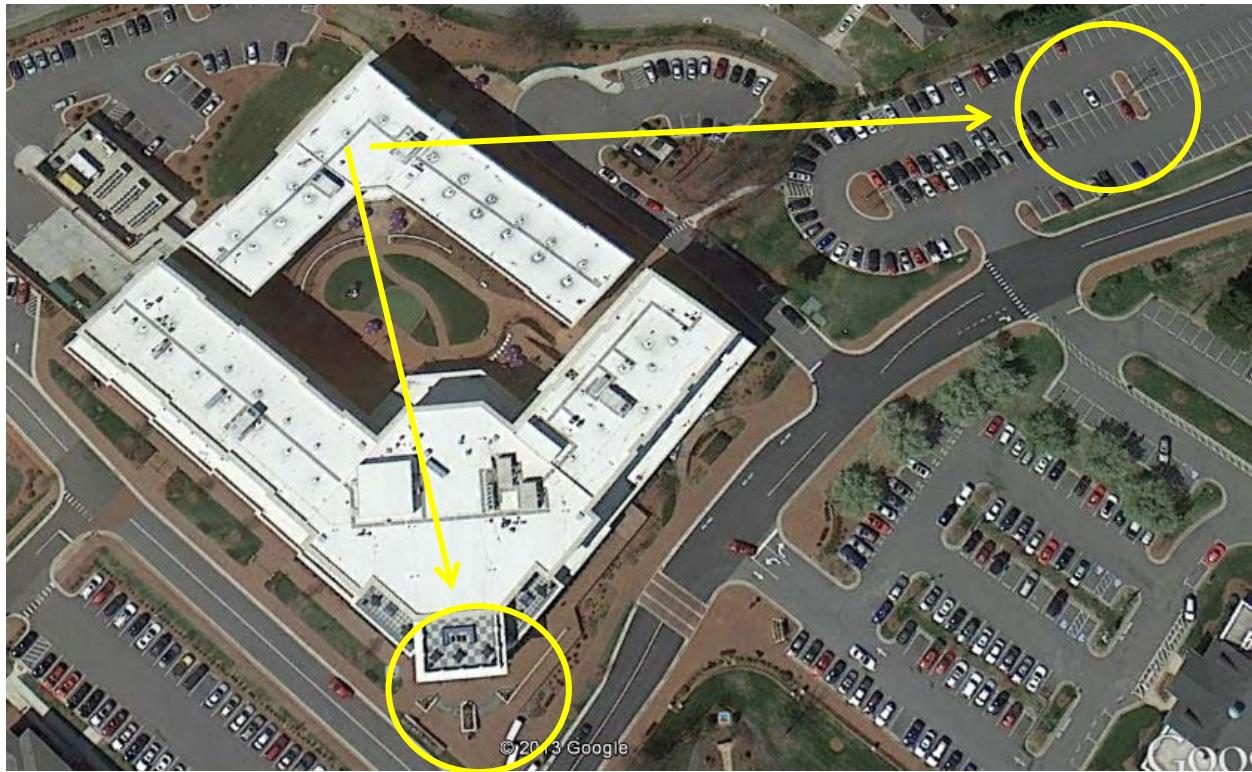
<b>PRIMARY RALLY POINT</b>	Assemble in the park towards Millis Hall.
<b>SECONDARY RALLY POINT</b>	Cross Point Place and assemble in the front parking lot of York Hall.



## University Center (UC2)

In the event of a fire alarm proceed to the nearest exit and assemble at the designated rally point until given an **ALL CLEAR** from a University official or member of the High Point Fire Department.

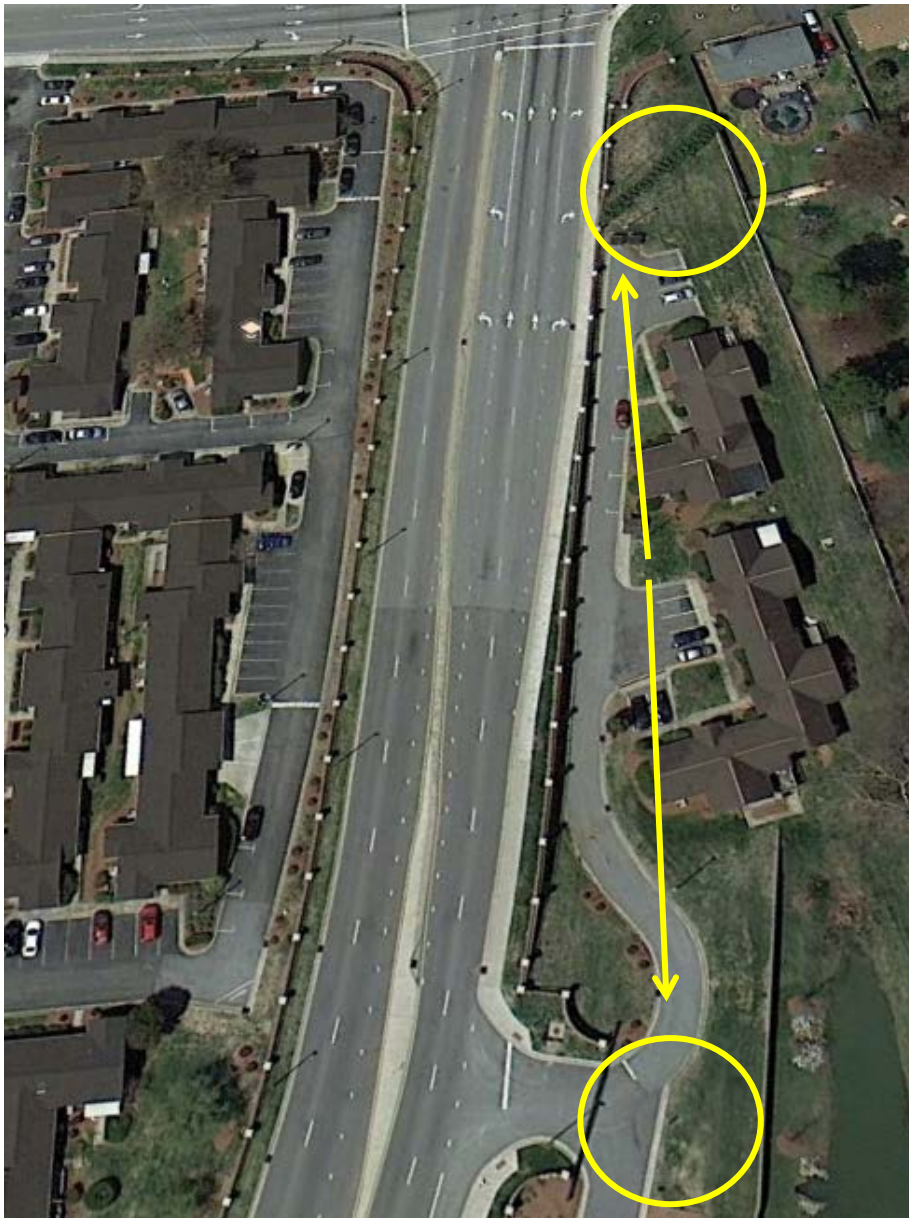
<b>PRIMARY RALLY POINT</b>	Exit and proceed down into the parking lot, away from the driveway.
<b>SECONDARY RALLY POINT</b>	Move around to the front of the Wanek Center on Panther Drive.



## University Village (U-Ville) Even Apartments

In the event of a fire alarm proceed to the nearest exit and assemble at the designated rally point until given an **ALL CLEAR** from a University official or member of the High Point Fire Department.

<b>PRIMARY RALLY POINT</b>	Assemble in the parking lot by the closest gate along North University Pkwy.
<b>SECONDARY RALLY POINT</b>	Assemble along the fence line of North University Pkwy by Centennial Street.



# University Village (U-Ville) Odd Apartments

In the event of a fire alarm proceed to the nearest exit and assemble at the designated rally point until given an **ALL CLEAR** from a University official or member of the High Point Fire Department.

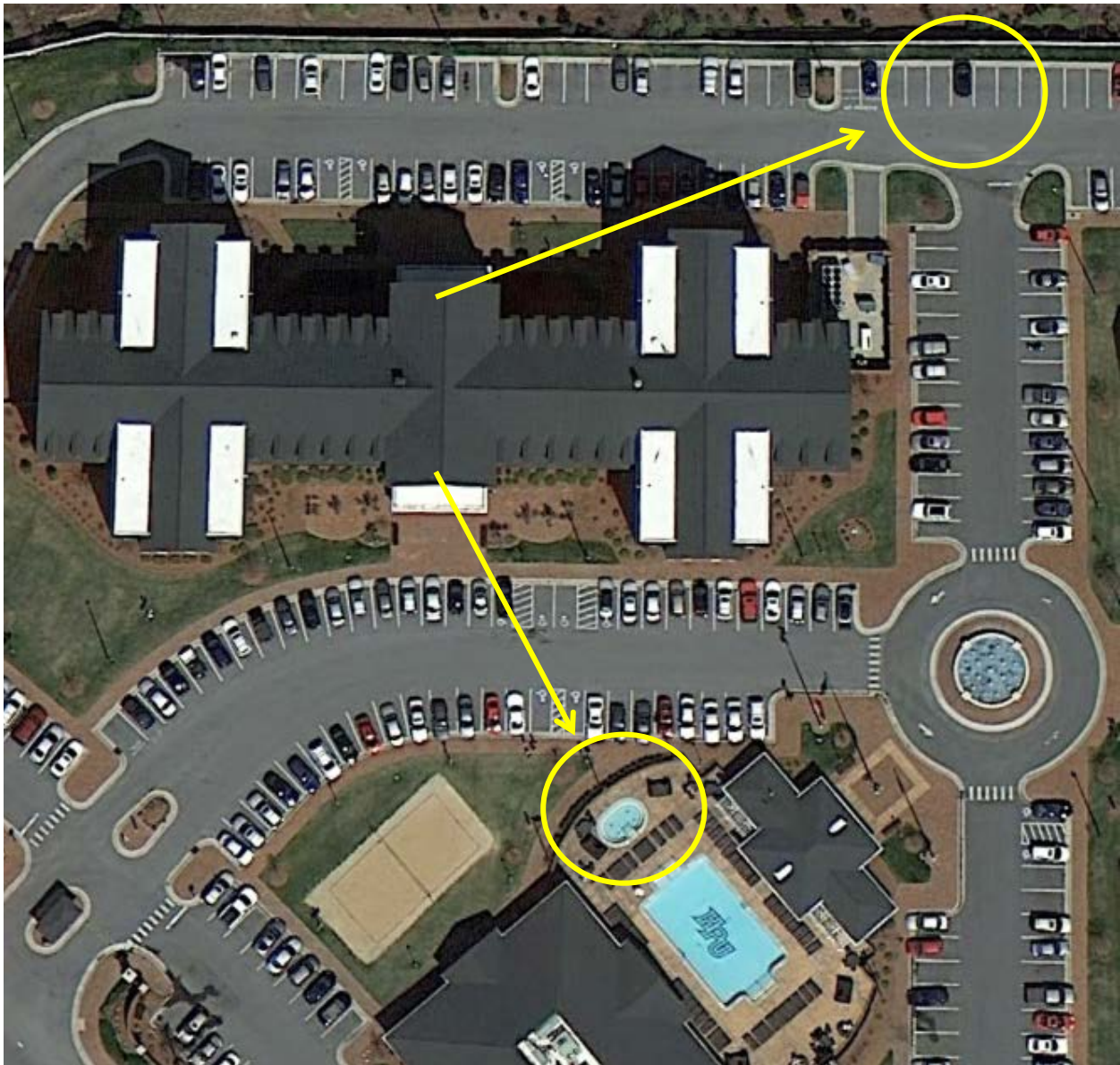
<b>PRIMARY RALLY POINT</b>	Assemble towards the end of the driveway towards Centennial Street by the entrance gate.
<b>SECONDARY RALLY POINT</b>	Assemble towards the end of the driveway towards North University Pkwy.



## Village 1

In the event of a fire alarm proceed to the nearest exit and assemble at the designated rally point until given an **ALL CLEAR** from a University official or member of the High Point Fire Department.

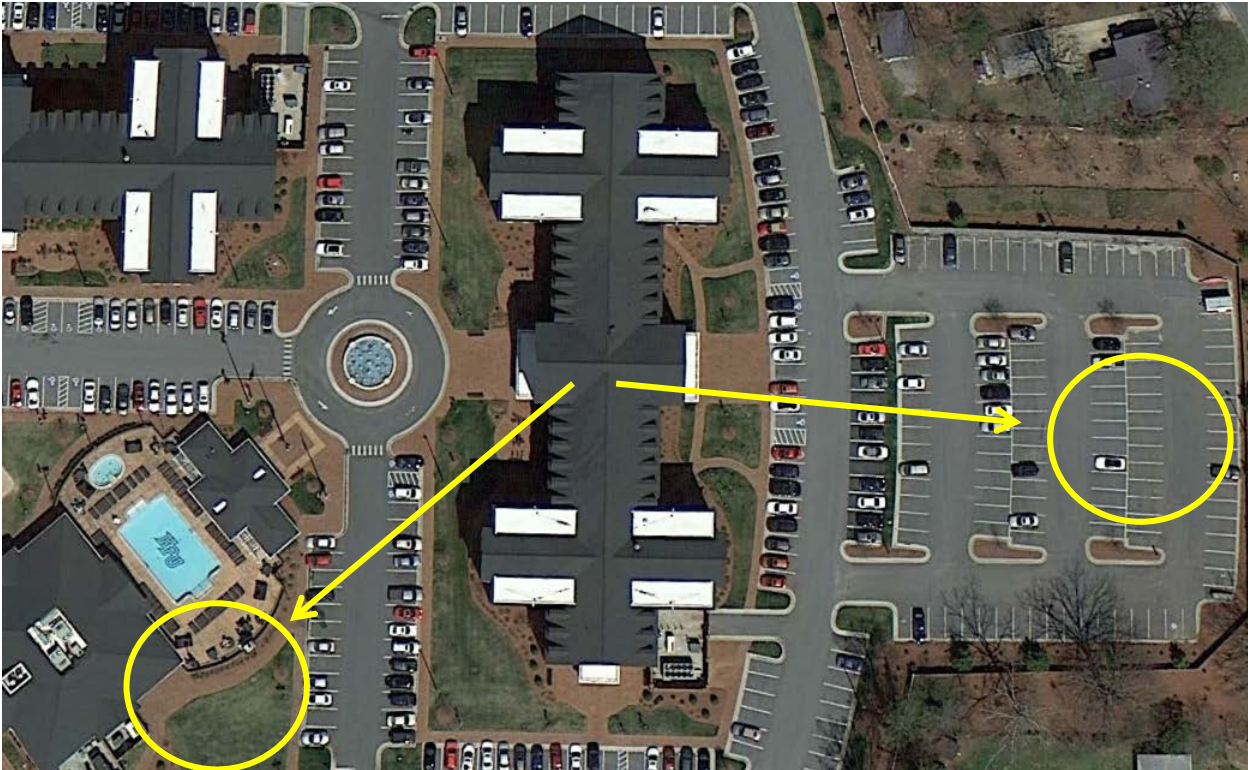
<b>PRIMARY RALLY POINT</b>	Assemble across the street from main entrance in front of Village Grille and Pool.
<b>SECONDARY RALLY POINT</b>	Exit out the back door and to the left, and assemble against the fence.



# Village 2

In the event of a fire alarm proceed to the nearest exit and assemble at the designated rally point until given an **ALL CLEAR** from a University official or member of the High Point Fire Department.

<b>PRIMARY RALLY POINT</b>	Assemble across the street to the left side of the Village Grille and Pool.
<b>SECONDARY RALLY POINT</b>	Exit out the back door, and assemble against the back parking lot.

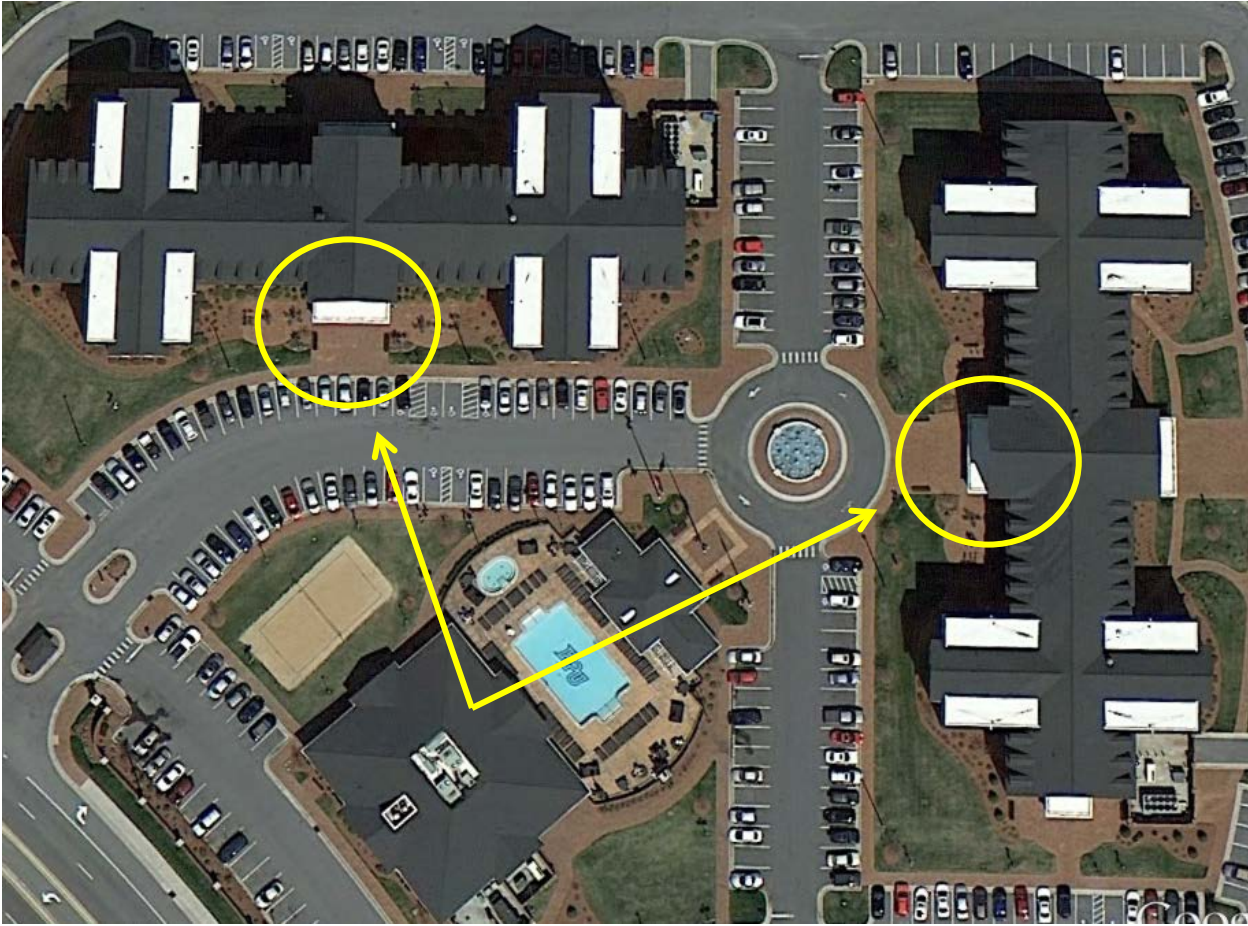




# Village Grille and Pool

In the event of a fire alarm proceed to the nearest exit and assemble at the designated rally point until given an **ALL CLEAR** from a University official or member of the High Point Fire Department.

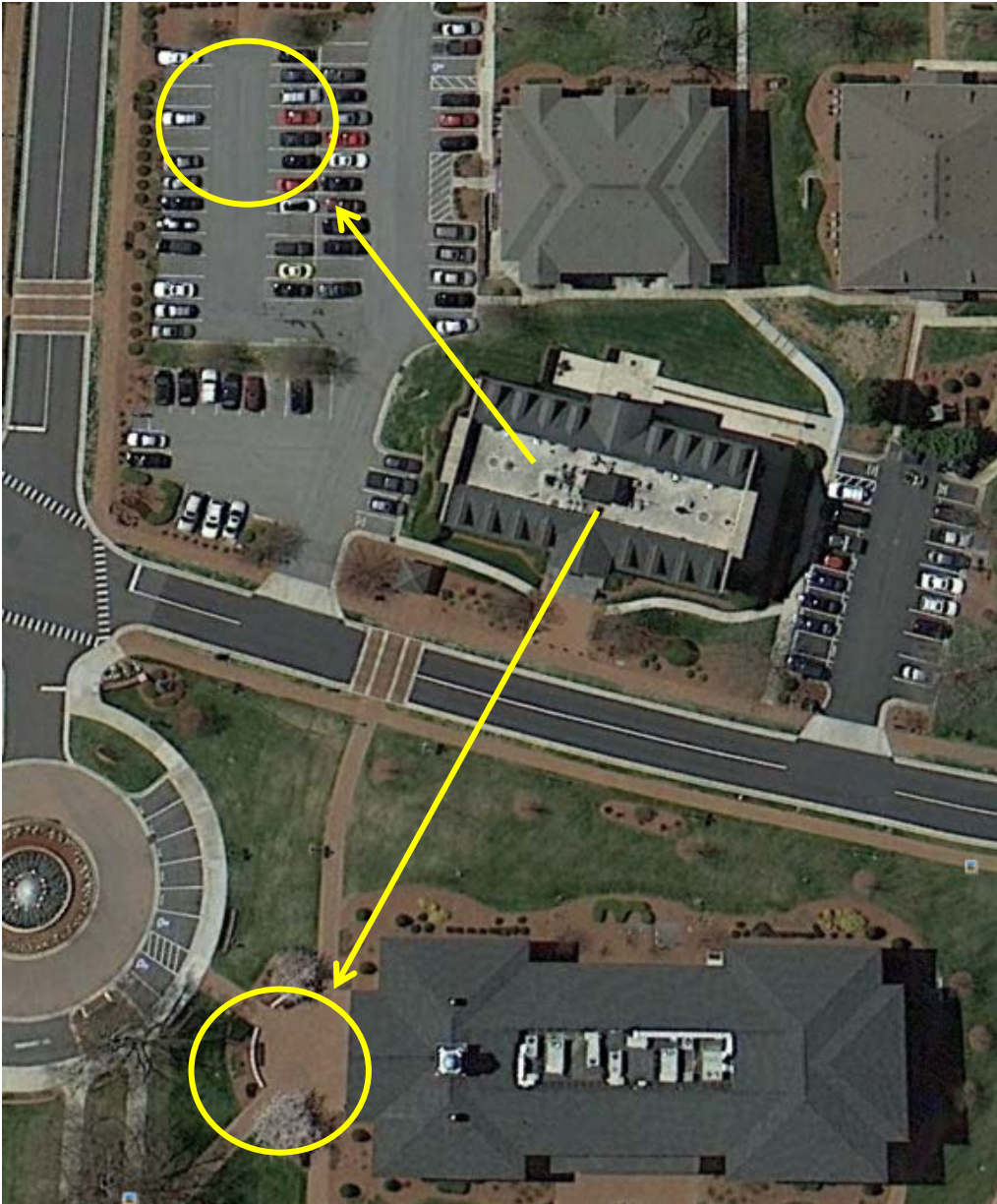
<b>PRIMARY RALLY POINT</b>	Assemble in front of Village 1.
<b>SECONDARY RALLY POINT</b>	Assemble in front of Village 2.



# Wilson Hall

In the event of a fire alarm proceed to the nearest exit and assemble at the designated rally point until given an **ALL CLEAR** from a University official or member of the High Point Fire Department.

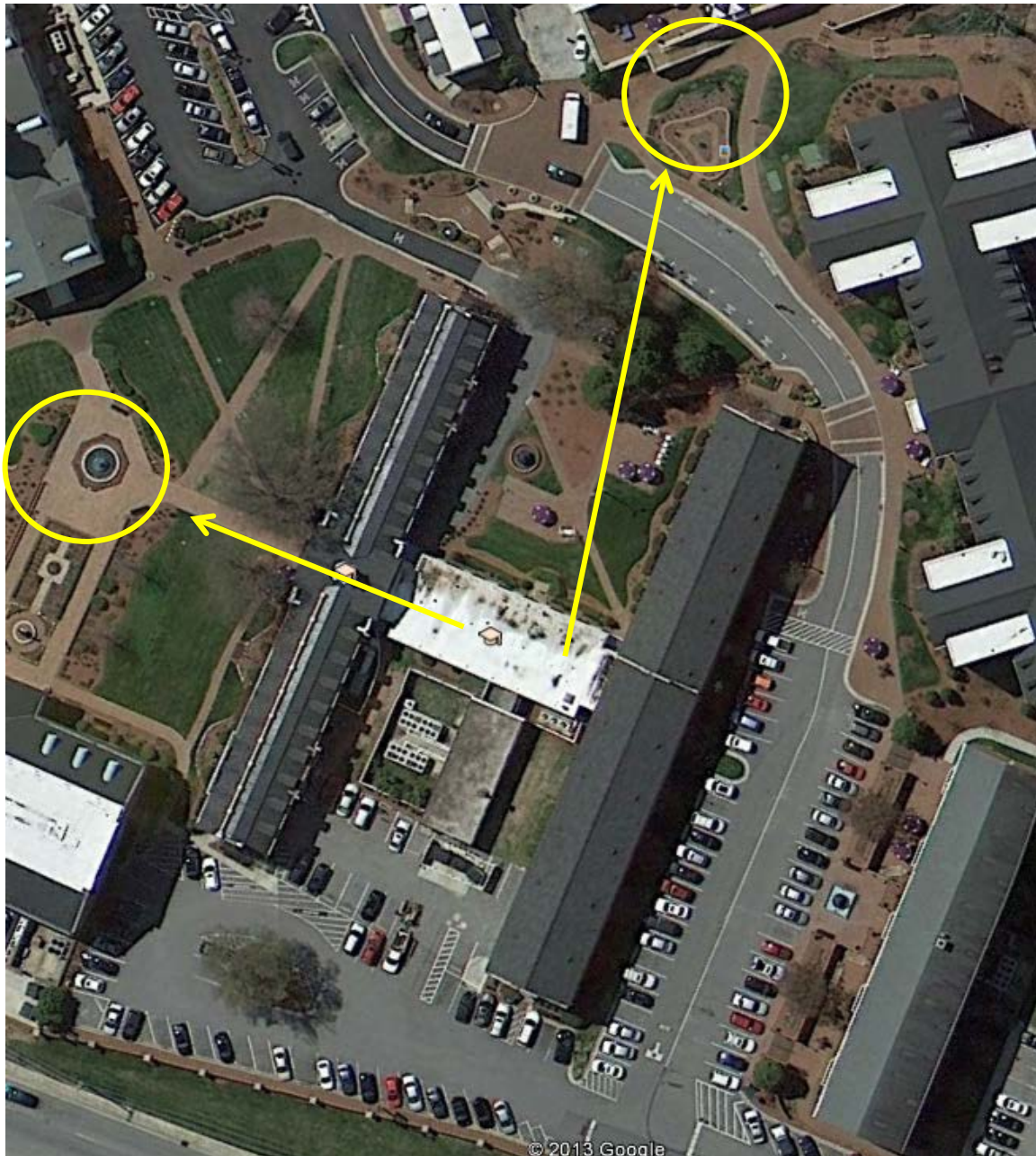
<b>PRIMARY RALLY POINT</b>	Exit out the front door and cross Panther Drive. Assemble at the Phillips School of Business.
<b>SECONDARY RALLY POINT</b>	Exit out and to the right; assemble in the back of the parking lot.



## Women's Complex

In the event of a fire alarm proceed to the nearest exit and assemble at the designated rally point until given an **ALL CLEAR** from a University official or member of the High Point Fire Department.

<b>MCEWEN</b>	Assemble in the courtyard.
<b>NORTH</b>	Assemble in front of Smith Library.
<b>WESLEY</b>	Assemble in front of Smith Library.
<b>YADKIN</b>	Exit and cross Blessing Way; assemble against the Slane Center.



## York Hall

In the event of a fire alarm proceed to the nearest exit and assemble at the designated rally point until given an **ALL CLEAR** from a University official or member of the High Point Fire Department.

<b>PRIMARY RALLY POINT</b>	Exit and go straight into the back parking lot.
<b>SECONDARY RALLY POINT</b>	Cross Point Place and assemble in the park behind Point Place apartments.

